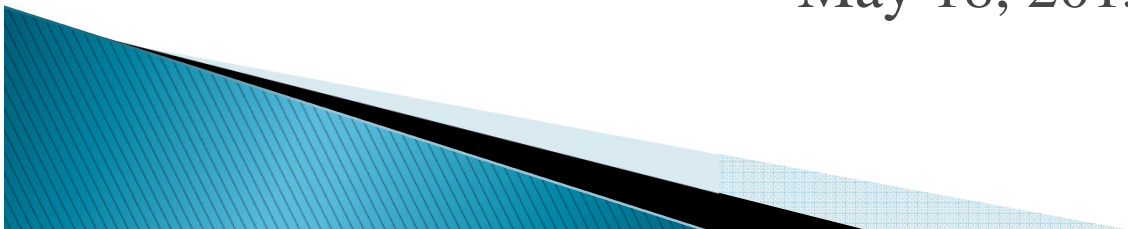


R.A. Long Park Improvements Project Update

**City of Longview
Parks and Recreation Board**

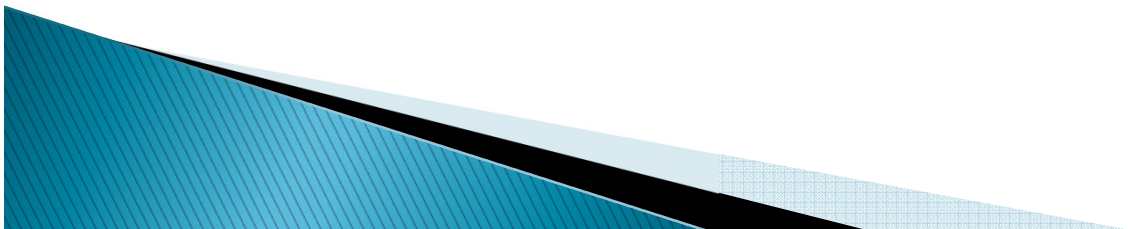
Ivona Kininmonth, Project Engineer

May 18, 2015



R.A Long Park Master Plan

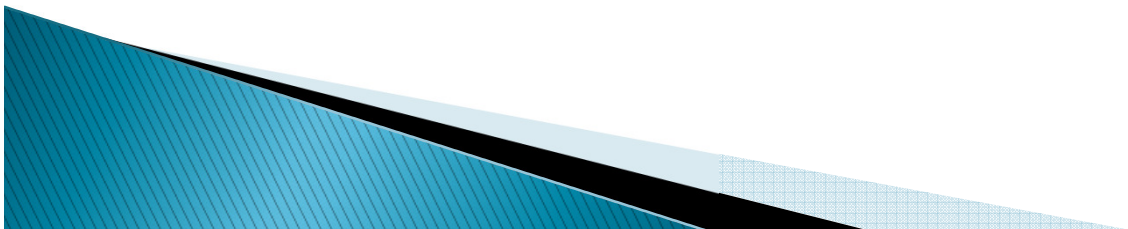
- ▶ Master Plan Goals
 - Slow traffic & increase pedestrian safety
 - Increase activity in the park
 - Improve condition of the park and restore historic site furnishings
- ▶ Traffic improvements completed in 2011
- ▶ Park improvements to be done in a phased approach
- ▶ Funding available to complete Phase 1 improvements
 - Kuntz Family Trust \$300,000
 - City funding \$100,000
 - Donation to construct central plaza fountain



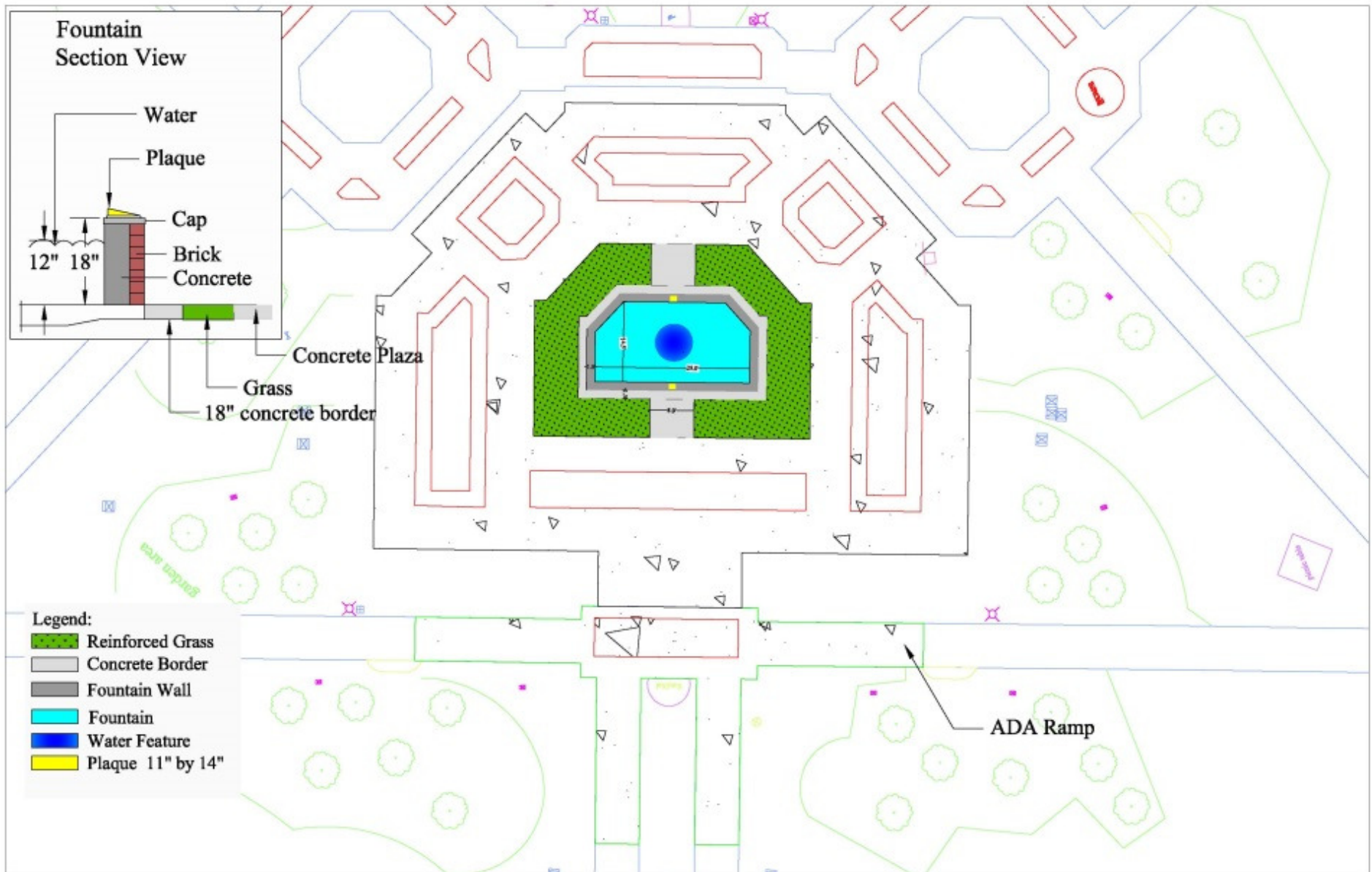
Project Elements

Listed by priority. Completion of individual project element depends on available budget

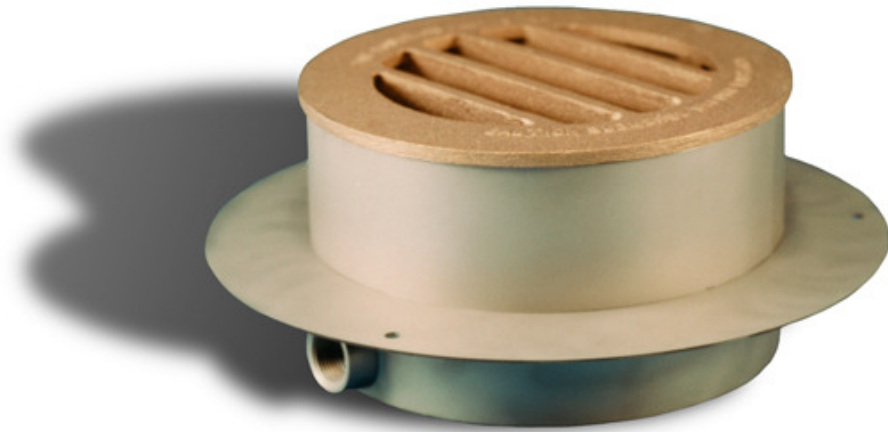
- ▶ Fountain (donation)
- ▶ R.A. Long Bust
- ▶ Concrete replacement
- ▶ Electrical Service
- ▶ Park Lighting
- ▶ Benches



Recommended Fountain Concept



Proposed Fountain Features



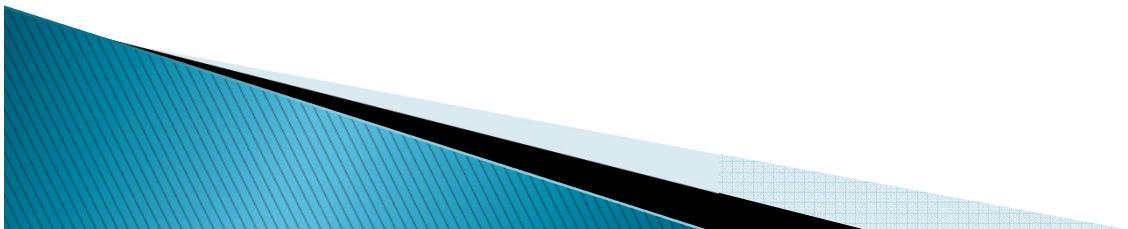
► Floor Mounted Lights

- Colored lenses
- Adjustable angle



► Water Castle Nozzle

- 12 feet spray height
- 7 foot spread
- 3 tier water height



Fountain Maintenance Requirements

▶ Filtration system

- Cartridge filters
 - Requires removal and washing of the filter
 - Comes with a spare cartage for ease of maintenance
 - Less expensive

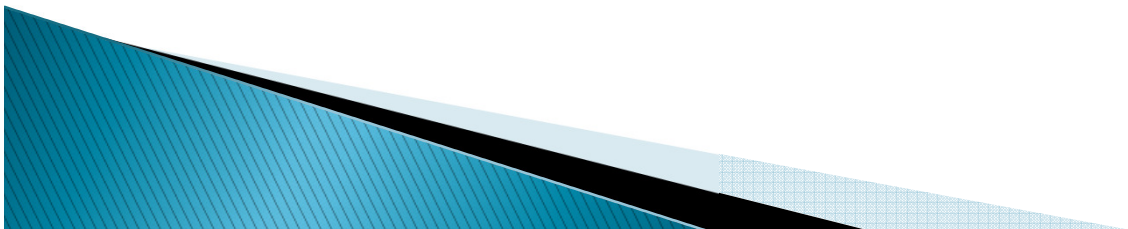
Cartridge filter system recommended

▶ Water treatment

- Chlorine or Bromine Feeder
 - Uses tablets
 - PH control
 - Algae and bacteria control

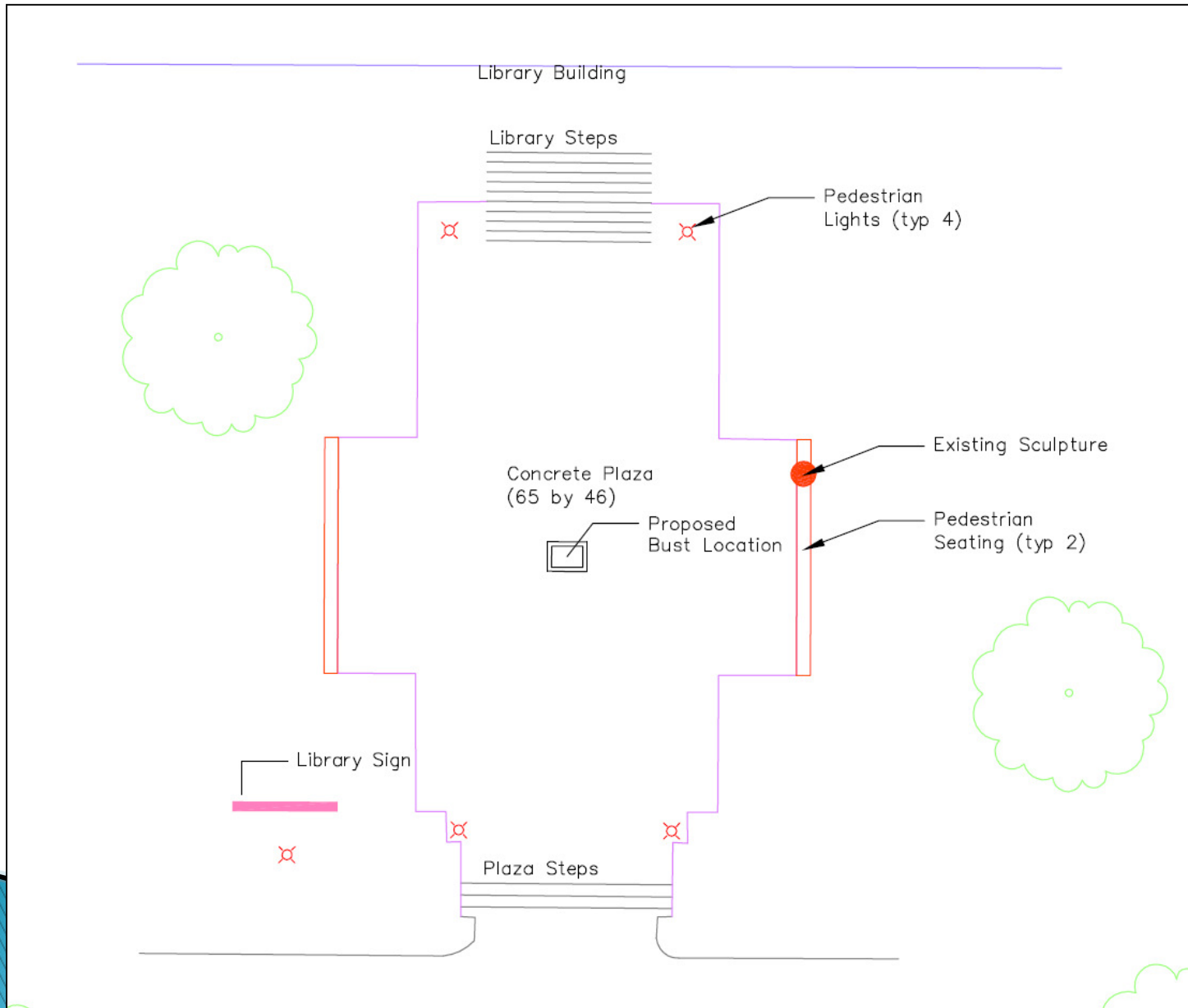
▶ General maintenance

- Clean trash and debris from the fountain basin
- Clean algae
- Check PH of the water
- Replace cartridge



RA Long Bust

- Relocate Bust in front of the library as shown in the Master Plan





04/16/2015 11:28

Concrete Replacement

- ▶ Replace plaza
- ▶ Replace plaza steps
- ▶ Replace defective sidewalk in the park



Concrete Replacement (Cont.)

- ▶ Replace the steps with accessible sidewalk on the west side of the plaza.
- ▶ Elevation of the sidewalk raised by 8", requiring adjustment of the sundial.



Electrical Service

- ▶ Consolidate existing services and provide additional capacity
- ▶ Christmas lighting impact



Existing Service



Proposed Service

Park Lighting Design



Original Park Light,
1925



Current Park Lights

Provide additional receptacles as required and
as budget allows



Power Receptacle

Proposed Park Light Design

Park Bench Design



Concrete / Wood Bench - Original Design



Metal Bench – Contemporary Design



Concrete / Wood Bench – Existing Original Bench

Park Bench Design (Cont.)

Option 1: Restore salvaged benches from downtown. Matches original design



Option 2: Fabricate new benches to follow existing original design

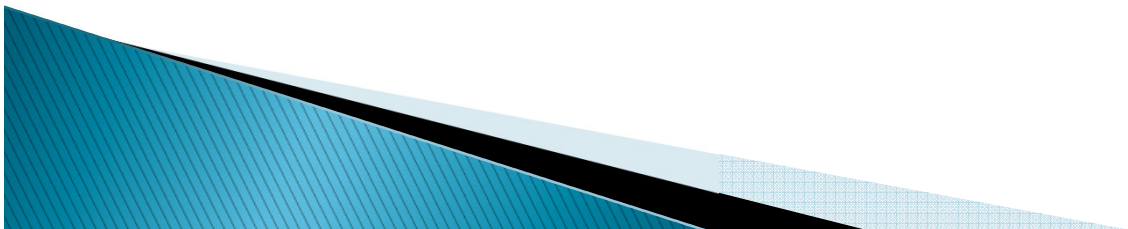


Option 1 preferred

- Restore concrete ends
- Restore wood
- Green color

Anticipated Schedule

- ▶ HPC – 4/27/15
- ▶ Library Board –May 4, 2015
- ▶ Parks Board –May 18, 2015
- ▶ HPC – May 27, 2015 Certificate of Appropriateness
- ▶ Project Longview –June 2, 2015
- ▶ City Council –June 11, 2015
- ▶ Start construction – August 24, 2015
- ▶ Estimated completion late October 2015



QUESTIONS?

