



# ARCHIE ANDERSON PARK Master Plan Update

---

October 2018



**PARKS &  
RECREATION**  
CITY OF LONGVIEW







ARCHIE ANDERSON PARK

# Master Plan Update

---

October 2018



**PARKS &  
RECREATION**  
CITY OF LONGVIEW



# ACKNOWLEDGEMENTS

---

We would like to thank all the contributors who assisted in formulating this update, including:

City of Longview Parks  
and Recreation Staff

Neighborhood Partners

Stakeholders

SCJ Alliance



# TABLE OF CONTENTS

---

<b>SECTION 1   Introduction.....</b>	<b>1</b>
Introduction.....	3
Vision and Goals.....	4
Existing Conditions.....	5
Existing Master Plan.....	8
 <b>SECTION 2   Master Plan Update Process.....</b>	 <b>11</b>
Project Timeline.....	13
Planning and Public Outreach.....	14
Proposed Master Plan Updates.....	26
Recommended Master Plan Update.....	30
 <b>SECTION 3   Update Implementation.....</b>	 <b>33</b>
Opinion of Construction Cost.....	35
Action Items.....	36



# TABLE OF CONTENTS

---

## List of Figures

Figure 1 – Timeline of Recent Park Developments.....	6
Figure 2 – Existing Master Plan (Adopted 2011).....	9
Figure 3 – Summary of Stakeholder Input.....	16
Figure 4 – Summary of Community Input.....	24
Figure 5 – Concept 1 – Parks Staff Input.....	27
Figure 6 – Concept 2 – Parks Staff and Stakeholder Input.....	28
Figure 7 – Concept 3 – Parks Staff, Stakeholder, and Community Input.....	29
Figure 8 – Preferred Master Plan Option.....	31



A teal-tinted photograph of a park. In the foreground, there is a grassy area. In the middle ground, there is a playground with various equipment, including a large arch structure. Behind the playground, there is a small, single-story building with a gabled roof. In the background, there are more trees and a fence. The entire image is overlaid with a large, curved teal shape on the left side.

## SECTION 1

# Introduction







# Introduction

---

In 2011, the Archie Anderson Park Master Plan was a planning effort to introduce new amenities into the park system. The main focus of the 2011 planning process was enhancing the park to accommodate a large baseball facility, although decline in youth baseball participation was already underway in Longview. The 2011 Master Plan proposes the installation of additional baseball features; the provision of a water feature, community garden, and orchard area; and the construction of a community center.

The purpose of this study is to update the existing Master Plan for Archie Anderson Park, which was previously adopted in 2011, to reflect current standards and community needs. SCJ Alliance was hired as a consultant to evaluate the current needs of the City of Longview, stakeholders, and the community.

Assessment of the community's needs took place through a series of engagement efforts to determine the issues and deficiencies in the park's existing amenities, as well as the potential opportunities for improvement. The information gathered through the outreach effort was then put toward the creation of an updated Archie Anderson Park Master Plan that reflects the community's existing needs and wishes.





# Project Vision and Goals

---

The vision and goals that were established as part of the 2011 Master Plan were used as a baseline for this update. The purpose of this update is not to transform Archie Anderson Park into a totally new environment. Rather, the aim of the current effort is to evaluate the existing facilities, make suggestions for reuse, and propose new elements that will contribute to the park's learning opportunities, everyday functions, and overall success. Thus, based on numerous discussions with the Parks and Recreation Department, the community partners, and the stakeholders, the following goals are applicable:

- » Promote local park identity
- » Connect the park to adjacent neighborhoods
- » Balance the park's active and passive uses
- » Provide a variety of experiences for a range of different age groups
- » Provide accommodations for large groups and events
- » Design the park to function all year round
- » Provide multi-use building for indoor activities
- » Improve pedestrian flows through the park
- » Connect the park to the future Highlands Neighborhood Trail
- » Provide a variety of educational opportunities
- » Encourage outdoor learning
- » Provide more parking



# Existing Conditions

---

Archie Anderson Park is a 6.38 acre community park located on Alabama Street between 21st and 22nd Avenues. Over the years, Archie Anderson Park has transformed and been redeveloped consistent with the community's activity and recreational needs.

- » Since 1990, the park has been used as an active recreation park with utilizing the need for baseball fields.
- » From 1990 to 2000, an additional baseball field and a playground area were added to the park amenities to further promote active recreation.
- » From 2000 to 2005, the basketball courts were constructed, and improvements were made to the baseball facilities, including equipment storage, fencing, and concession areas.
- » From 2005 to 2013, Archie Anderson Park was at full build out with the addition of bleachers, batting cages, lights for the basketball court, and a connection to the newly constructed Highlands Neighborhood Trail.
- » From 2013 to present, the park has transformed consistent with the decline in use of the baseball facilities – removing 3 of the 4 baseball fields, dugouts, baseball fencing, bleachers, and batting cages.





## 1990–2000

Additional baseball field and playground area added



## 2000–2005

Basketball courts constructed; improvements made to baseball facilities



## 2005–2013

Bleachers and batting cages constructed; lights added to basketball courts; connection to new Highlands Neighborhood Trail constructed



## 2013–present

Three of 4 baseball fields removed, including dugouts, fencing, bleachers, and batting cages

**Figure 1 | Timeline of Recent Park Developments**



Currently, the park offers the following amenities:

- » Park entrance sign
- » Lighted basketball courts
- » School age playground equipment
- » Toddler play area
- » Parking lot
- » Youth baseball clubhouse
- » Baseball field
- » Scoreboard
- » Dugouts
- » Baseball fencing
- » Snacks and batting cage area
- » Open lawn area
- » South access road
- » Connection to Highlands Neighborhood Trail
- » Lions' Den boxing club
- » Bleachers







# Existing Master Plan

---

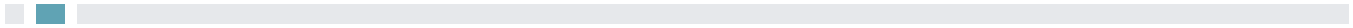
The 2011 Master Plan was developed through a rich involvement process to ensure it would reflect the local community's needs and values. This planning process, conducted from May–November 2010, included two workshops, draft and final designs, and delivery of the final Master Plan.





**Figure 2 | Existing Master Plan (Adopted 2011)**









## SECTION 2

# Master Plan Update

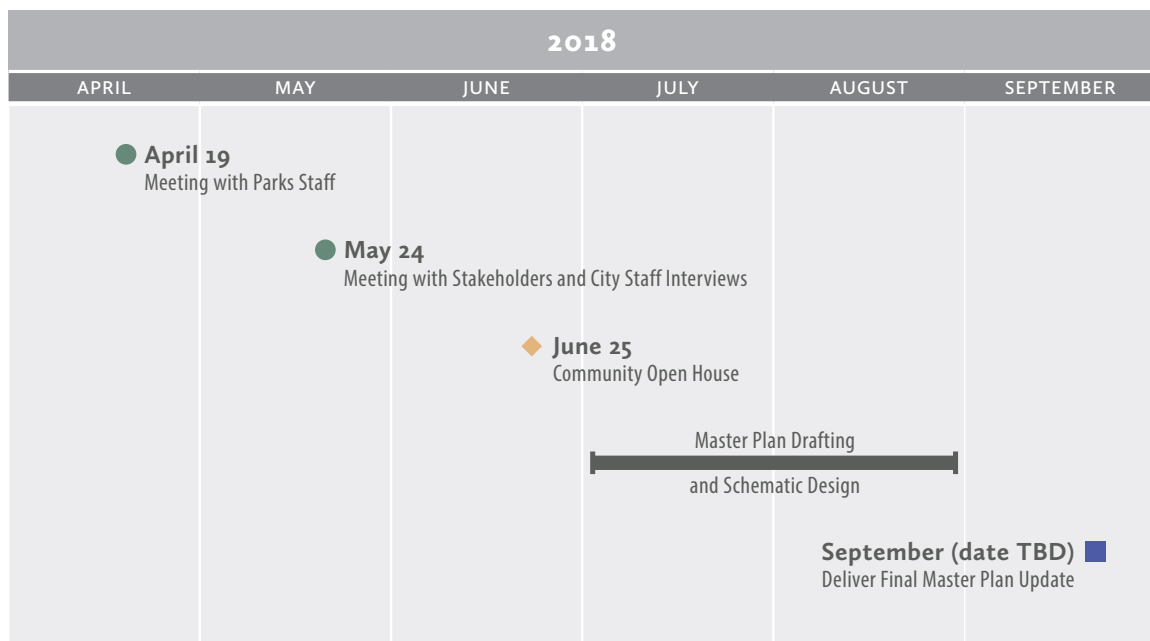






# Project Timeline

The planning process for this Master Plan Update was public and interactive. It took place over three months between April and July 2018.



## LEGEND

Ongoing Task    
 Staff/Stakeholder Meeting    
 Public Meeting    
 Deliverable





# Planning and Public Outreach

---

## City of Longview Staff Meeting

On April 19, 2018, SCJ Alliance met with the City of Longview Parks and Recreation staff to discuss the existing conditions, existing usage, and projected future of Archie Anderson Park. From this meeting it was understood that youth baseball in the City of Longview is in decline, and therefore usage of the park for baseball games and tournaments is also in decline.

Consequently, the focus was on the future needs for Archie Anderson Park and the amenities that would best serve the Highlands Community. Amenities such as a covered pavilion, additional parking, and internal pedestrian walkways were discussed. The conversation further turned to park usership, maintenance, and security of the users and community.

A conceptual plan was drafted to address these items and is presented in Figure 5 (Concept 1).

## Stakeholder Interviews

On May 24, 2018, stakeholder interviews were held with community businesses, community leaders, City of Longview staff, and community advocates to identify issues, opportunities,



and concerns regarding the existing park and a possible future update to the Master Plan.

Discussion topics included:

- » Amenities needed
- » Amenities not needed
- » Public safety concerns/issues
- » Operation and maintenance issues
- » Aesthetic and environmental issues
- » Park facilities and phasing

A categorized summary of the issues, opportunities, and concerns brought up during the stakeholder interviews is shown in Figure 3.

Another conceptual plan alternative was drafted to address the items brought up in this discussion; it is presented in Figure 6 (Concept 2).



**Figure 3 | Summary of Stakeholder Input**



» The chart above represents the issues, opportunities, and concerns identified by stakeholders, broadly split into six categories for the purposes of plan development. A complete list of stakeholder responses, compiled by category, can be found at right.



## PUBLIC SAFETY ISSUES (29%)

## Pedestrian Safety/Traffic Calming (9%)

- Crosswalks
- Crosswalks on Alabama
- Possibly speed bumps or calming features on surrounding streets
- Crosswalks across streets is a must – suggest RRFBs
- Speed bumps on 21st and 22nd – traffic calming devices – community Center will increase traffic on 21st and 22nd
- Crosswalks at intersections and entrances
- Marked crosswalks
- RRFBs should be used
- Speed limit sign
- Traffic calming
- Dangerous for kids to have “cut-through” access in park (when parking lots go all the way through from 21st to 22nd)

## Lighting and Visibility (7%)

- Currently – inadequate lighting for the park and streets – street lighting and park lighting is needed (if electrical work is proposed, can street lighting be included on park side?)
- Street lighting
- Lighting is an issue – light the streets and light the park
- Better lighting on back trail (Highlands Trail)
- Don't block sight lines
- Too many trees – maintain sight lines for safety
- Trees need to have a high canopy height
- Large shrubs can be difficult (for visibility)

## ADA Accessibility (2%)

- Internal pathways need to meet ADA
- Build up park for ADA folks
- Is the walking path gravel vs. hard surface? There is an ADA compliant gravel mix that can be used

## Discourage Illicit Activity (11%)

- Consider a “Block Watch” to look at the park
- Enforce park hours
- Park hours are important
- Pavilion will be turned into homeless shelter
- Needles
- Homeless activity concerns in pavilion
- More activity at park = less criminal activity
- Homeless concerns
- Use loud buzzing lights to discourage sleeping in the park
- Fence in the park – ornamental, with gates
- Concerned about pavilion and seedy activity – homeless
- Sharps containers needed
- Homeless deterrent amenities
- Concerns about location of Community Center – safety concerns

OPERATIONS/  
MAINTENANCE/  
FUNDING ISSUES (10%)

## Maintenance Issues/Concerns (7%)

- Ease of maintenance is important
- Inside corners are tough to mow – can be concrete or bark mulch
- Irrigation and water spigots should be provided
- Irrigation of passive recreation
- Gravel is easier to maintain for paths; hard surface is better
- Gravel paths need to be sprayed with weed control
- Maintenance of Community Garden is difficult
- No water feature (maintenance issues)

## Pavilion Rentals (&lt;2%)

- Is the shelter available for rentals?
- Don't envision pavilion being rented

Community Center  
Ownership/Operation (<2%)

- Who is responsible for operation at the Community Center?
- Concerned who will own/fund/operate Community Center building – hoping the City would be responsible

AESTHETIC/  
ENVIRONMENTAL  
ISSUES (12%)

## Aesthetic Suggestions (10%)

- Keep trees
- Consider a water feature as an alternative
- Complement buildings with same style, colors, roofing, etc.
- Water feature would be nice
- Consider rubber internal trails – no gravel – would not look good
- Change elevation throughout park
- Lighting of the park – use ornamental lighting
- Elm trees
- Green benches
- Water feature is a good idea (not needed – nice to have)
- Water feature would be nice – I like the idea of a water feature
- Rubber chip for playground

Environmental Issues/  
Concerns (2%)

- Worried about lights and neighbors (light pollution)
- Air quality – for mitigation, BMPs, landscaping?
- Cut down on hard surfaces for stormwater purposes

SUGGESTIONS FOR  
PARK FACILITIES AND  
PHASING (11.5%)Suggestions for Existing  
Buildings (4%)

- The Boxing Building should be demo'd and rebuilt
- Bus stop location shelter to be relocated
- Concession stand could be remodeled and used during basketball tournaments
- Lions' Den is too small as it exists
- Expand Lions' Den building

Suggestions for Proposed  
Facilities (4%)

- Good idea to have gravel internal path with concrete perimeter path
- Move Community Center to middle of park to utilize a single parking lot
- How do you get pavilion and playground next to each other?
- Put pavilion closer to Community Center building or make it an extension to the Community Center
- Electricity throughout

## Needs for Summer Program (&lt;2%)

- All buildings should have electricity for summer program
- Summer programs can use Lions' Den and Community Center

## Phasing Concerns (&lt;2%)

- Master plan should address maximum use while park is phased
- Work needs to be completed all at once

## AMENITIES NEEDED (30%)

## Parking (2%)

- Increased parking is better than using on-street parking
- The more parking, the better
- More parking at the Community Center building

## Restrooms (4%)

- Restrooms for patrons
- Boxing Club does not currently have a bathroom
- Restrooms should be provided – consider putting on outside of Community Center – must have restrooms
- Where are the restrooms?
- Bathrooms and drinking fountains

## Kitchen and Sink (3%)

- Summer food program – need a “certified” kitchen
- Sink, refrigerator to continue program
- Need for kitchen with sink – wherever the summer programs will be located must have sink and kitchen – could have a sink area attached to Boxing Building
- Provide an area in pavilion for bathroom and sink

## Athletic/Recreation Facilities (6%)

- Soccer fields – more athletic facilities
- Frisbee golf consideration
- Bocce ball court
- Increased access to Highlands Trail
- Provide an interactive park – exercise stations
- Concrete extension for Lions' Den for fitness storage and outdoor fitness areas
- Parkour stations

## Community Garden/Orchard (2%)

- Community Garden is a great amenity
- Orchard/fruit trees – inspire people to eat fresh fruit
- Orchard would be nice

## Community Center (&lt;2%)

- Community Center is the most important thing
- Community Center is the biggest preference to complete to help the community

## Signage (3%)

- Signage should be addressed – no parking, no sleeping
- Signage – welcome to the park, no sleeping
- Signage – park rules, history board
- Gateway signage

## Open/Green Space (&lt;2%)

- Increase green space
- Need open lawn area

## Dog Park (&lt;2%)

- Fenced in off-leash dog park area
- Off-leash dog park – temporary (prior to construction of Community Center)

## Other (4%)

- Drinking fountains
- Garbage cans and benches – park amenities
- Spigots with water fountains needed
- Barbecues, benches, waste baskets
- Farmers' Market

AMENITIES NOT  
NEEDED (7.5%)

## Parking (&lt;1%)

- Does the park need all the parking that's shown, considering there is on-street parking?

## Restrooms (2%)

- Most neighborhood parks do not have restrooms
- If Community Center bathrooms are available during events, then no additional bathrooms are necessary (could have outdoor restrooms attached to Community Center?)
- No bathrooms – Portland Loos only

## Community Garden/Orchard (&lt;1%)

- No orchard, no garden

## Dog Park (&lt;1%)

- Not the right place for an off-leash dog park

## Pavilion (&lt;1%)

- Iffy on pavilion

## Pathways (&lt;2%)

- Perimeter pathway may not be needed if sidewalks remain
- Does the park need all of the internal paths?





## Community Open House

On June 25, 2018, a community open house was held at the Highlands Neighborhood Association building. This open house was an opportunity for the community to contribute ideas and suggestions for the update to the Archie Anderson Master Plan. The participants were shown conceptual site plans and asked to comment on their likes and dislikes about each concept. They were also presented with potential park amenities and asked to select those they thought would be most appropriate to the park, and to provide input on any additional needs the community might have.

Photos on the following pages show participants' written responses and additional input. A categorized summary of these responses is shown in Figure 4.

An additional conceptual plan alternative was drafted to address the issues and concerns discussed at the open house; it is presented in Figure 7 (Concept 3).





*Community members providing input at the June open house*



## YOUR INPUT: CONCEPTUAL SITE PLAN 1

What do you like most about this site plan?

- basketball courts
- playground
- multi-use pavilion

multi-use pavilion  
multi-use pavilion

Nothing - Drop it &  
go for #2

TREES

What do you dislike most about this site plan? Is there anything you would add to (or take away from) the plan to improve it?

Where are the security/surveillance cameras?

- Multi-purpose lawn could be better-used for more specific needs
- Not very detailed

no community bldg - leave open green space for soccer, lacrosse, events  
Put recreation on one end  
no community building - like satellite building

Spec Multiple Activities for kids all ages

SPORTS, ENTERTAINMENT - THIS ISN'T A RETIREMENT COMMUNITY  
THREE MORE YOUTH AT ONE PUT ONE MORE THERE

Community input on Conceptual Site Plan 1



**YOUR INPUT**

What do you like most about this site plan?

Community interaction with parking, and with kids playing with HWA and having all gardens in the new center.

- lighting & security
- dog-walking areas
- drinking fountains / garbage cans
- restrooms and water access for visitors
- lighting
- Multipurpose lawn - away from the playground
- potential for sports fields
- lighting crosswalks
- community building

- Drop it a use a smaller one for other outdoor stuff

What do you dislike most about this site plan? Is there anything you would add to (or take away from) the plan to improve it?

Need surveillance / security cameras

Do not put in a community garden - Does not work.

Water park, being used by dogs

- aesthetics are good but shouldn't be items that could potentially be vandalized or stolen
- Use concrete for paths not gravel
- community garden already exists at current Highlands Community Organization which may relocate according to plan

Don't like

- Parking so far down at the other end of the park.

No drinking fountains.

Archie Anderson Park Master Plan Update  
COMMUNITY OPEN HOUSE | Monday, June 25, 2018

PARKS & RECREATION

### Community input on Conceptual Site Plan 2



[illegible]



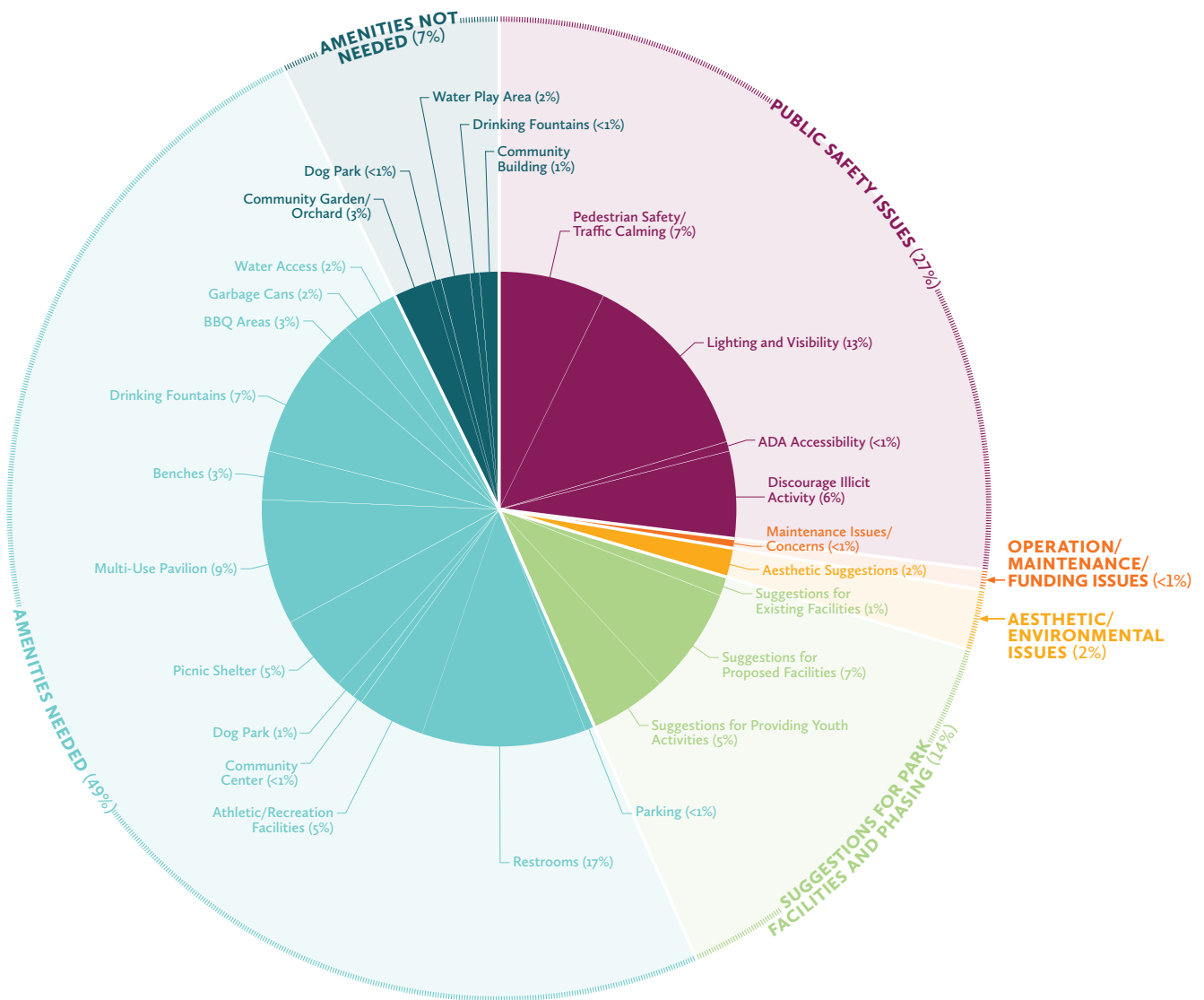
## YOUR INPUT: PARK AMENITIES

Are there any other amenities you would like to see at the park? What would get you to use the park more frequently?

- Security Surveillance System -*
- IF Community Building is put in  
The Archie Anderson Beach  
Should be brought Down to the Park!*
- *MULTIPLE ACTIVITIES FOR KIDS  
INVEST IN THEM NOT ONE DOGS!!*
  - *Baseball Backstop*
  - *First Aid Center*
  - *Onsite Security*
  - *Coffee Shop*
  - *ALL Ages Activities*
  - *Modern Activities*
  - *Inside Activities on  
Raining - Bad Weather  
Days - After Hours to 6:00 PM.*
  - *Safe Ride Home After HRS.  
For Children.*
  - *Roof over the basket Ball Court.*
  - *Longer Hours Being Open.*
  - *All-purpose sports field  
→ w/ sign-up board so people can reserve & use it*
  - *Cut Bump out by Park for ADA parking*
  - *SECURITY KEY CARDS -*
  - *Photo ID for Security*



**Figure 4 | Summary of Community Input**



» The chart above represents the issues, opportunities, and concerns identified by community members during the open house, broadly split into six categories for the purposes of plan development. A complete list of stakeholder responses, compiled by category, can be found at right.



## PUBLIC SAFETY ISSUES (27%)

### Pedestrian Safety/Traffic Calming (7%)

- Crosswalks (x11)

### Lighting and Visibility (13%)

- Lighting (x20)

### ADA Accessibility (<1%)

- Curb cut-out by playground to provide ADA parking

### Discourage Illicit Activity (6%)

- Where are the security/surveillance cameras?
- Need surveillance/security cameras
- Security/surveillance system
- Onsite security
- Security key cards
- Photo ID for security
- Security (x2)
- Bathrooms should be kept locked at night

## OPERATIONS/ MAINTENANCE/ FUNDING ISSUES (<1%)

### Maintenance Issues/ Concerns (<1%)

- Aesthetics are good, but shouldn't be items that could potentially be vandalized or stolen

## AESTHETIC/ ENVIRONMENTAL ISSUES (2%)

### Aesthetic Suggestions (2%)

- Trees (like the number of trees in Site Plan 1)
- Water feature (x2)

## SUGGESTIONS FOR PARK FACILITIES AND PHASING (14%)

### Suggestions for Existing Facilities (1%)

- Provide roof over the basketball court
- Longer hours being open (for park in general)

### Suggestions for Providing Youth Activities (5%)

- Need multiple activities for kids of all ages
- Kids need things to do
- All ages activities
- Multiple activities for kids
- Provide modern activities for kids – not just arts and crafts
- Provide inside activities on rainy/bad weather days – after hours to 6:00 pm
- Provide safe ride home after hours for children
- Need sports, entertainment – this isn't a retirement community – there are youth at risk, put our money there

### Suggestions for Proposed Facilities (7%)

- Multipurpose lawn could be better used for more specific needs
- Put recreation on one end of park
- No community building – police satellite building only
- Multipurpose lawn away from the parking area (like in Site Plan 2)
- Use concrete for paths, not gravel
- Include first aid center (maybe as part of community center)
- Don't like parking so far down at the other end of the park (like in Site Plan 2)
- Provide coffee shop or some community gathering space in community building – to draw people in
- Like the idea of community interaction with parking, and with LPD joining with HNA and having all partners in the new community center
- If community building is put in, the Archie Anderson bench should be brought down to the park (from its current location at the LPD satellite office)! (x2)

## AMENITIES NEEDED (49%)

### Parking (1%)

- More parking

### Restrooms (11%)

- Restrooms (x17)

### Athletic/Recreation Facilities (5%)

- Basketball courts
- Playground
- Like the potential for sports fields in Site Plan 2
- Baseball back stop
- Need to keep at least one baseball field to promote youth activity – city needs to get kids active
- All-purpose sports field – with sign-up board so people can reserve and use it
- Instead of having a community building, leave open green space for soccer, lacrosse, events

### Community Center (<1%)

- Community building [is what I like most about Conceptual Site Plan 2]

### Dog Park (1%)

- Dog walking areas
- Off-leash dog park

### Picnic Shelter (5%)

- Picnic shelter (x8)

### Multi-Use Pavilion (9%)

- Multi-use pavilion (x13)

### Benches (3%)

- Benches (x5)

### Drinking Fountains (7%)

- Drinking fountains (x11)

### BBQ Areas (3%)

- BBQ areas (x4)

### Garbage Cans (2%)

- Garbage cans (x3)

### Water Access (2%)

- Water access/play area for visitors (x3)

## AMENITIES NOT NEEDED (7%)

### Community Garden/Orchard (3%)

- Do not put in a community garden – does not work
- Community garden already exists at current Highlands Community Organization which may relocate according to plan (x2)
- Community gardens won't last 6 months

### Dog Park (<1%)

- Invest in our kids, not our dogs!!

### Water Play Area (2%)

- Would be used by dogs (x2)
- Would become a public toilet

### Drinking Fountains (<1%)

- No drinking fountains

### Community Building (1%)

- No community building – leave open green space for soccer, lacrosse, events
- Drop community building and use a smaller one for police satellite office





# Alternative Master Plan Updates

---

As mentioned above, community concerns and suggested amenities were addressed and channeled into three concepts that have been vetted through the planning process.

An initial plan concept, Concept 1, was developed based on early input from City of Longview Parks and Recreation staff (Figure 5).

After meeting with Parks and Recreation staff, stakeholders were consulted. Their input was used to expand on the initial concept, leading to the creation of Concept 2 (Figure 6).

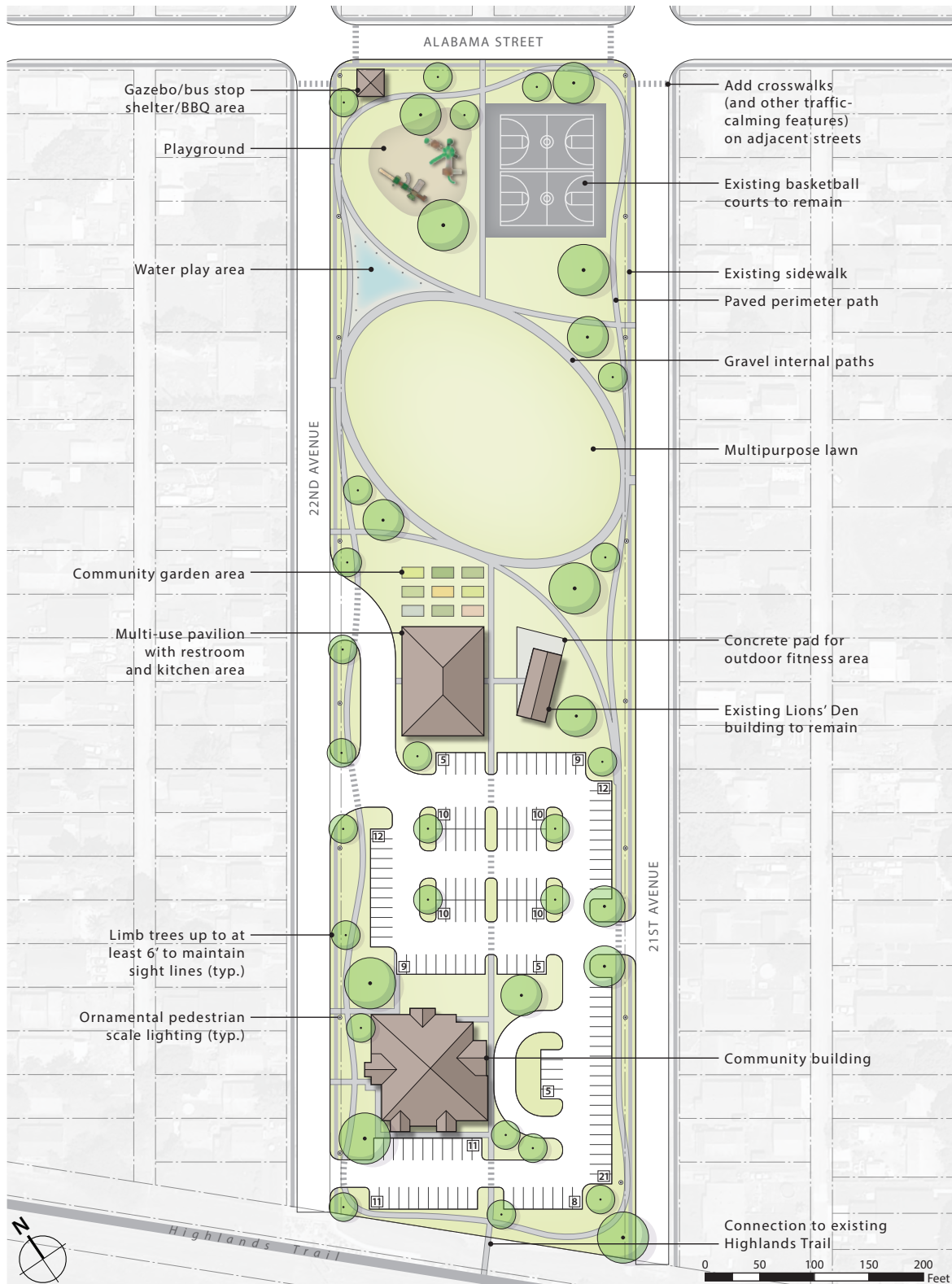
Finally, after input from both the City of Longview Parks and Recreation staff and community stakeholders, Concepts 1 and 2 were presented at a community open house. Comments reflective of that meeting are outlined in Concept 3 (Figure 7).





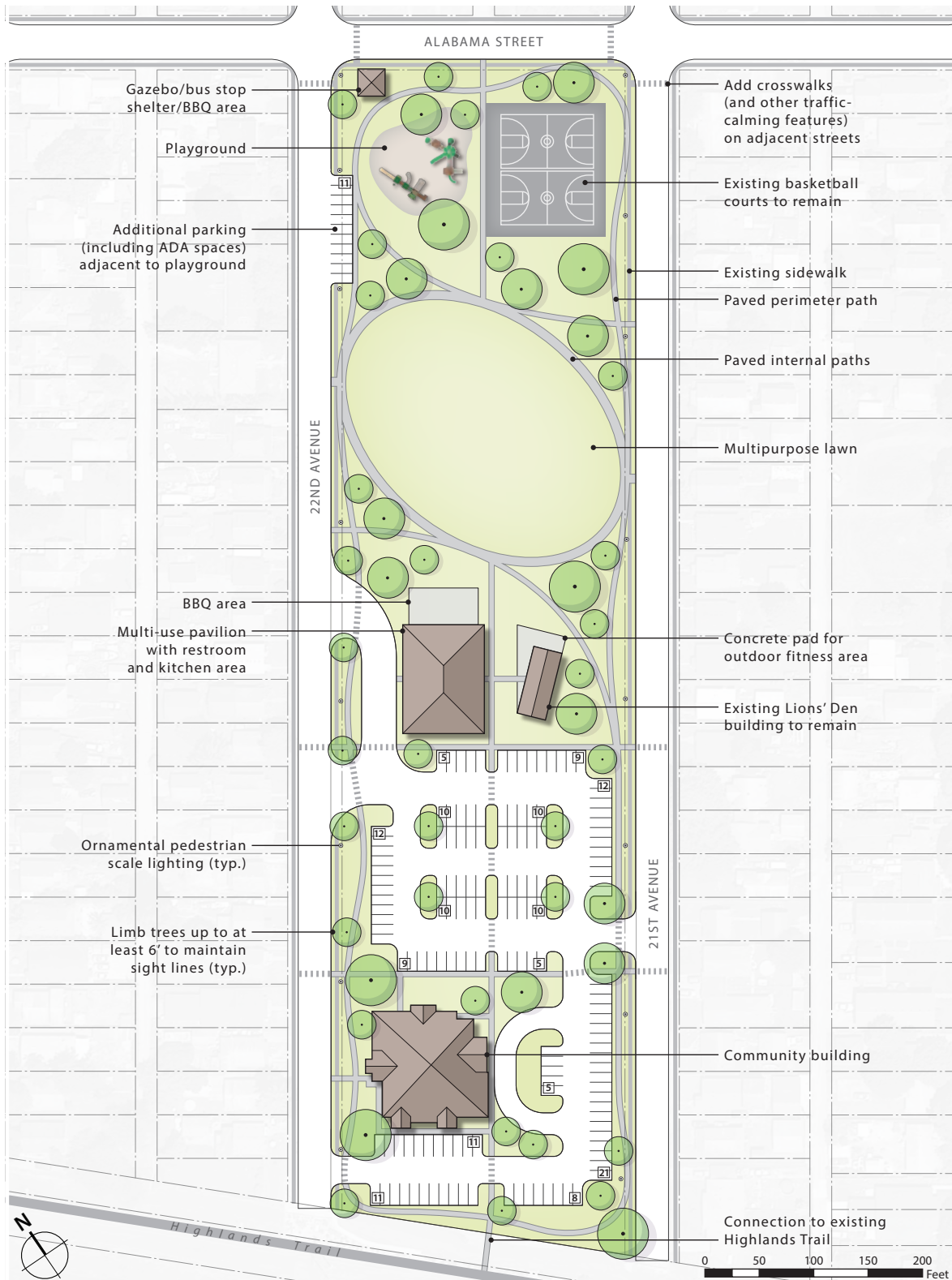
**Figure 5 | Concept 1 – City Parks Staff Input**





**Figure 6 | Concept 2 – City Parks Staff and Stakeholder Input**





**Figure 7 | Concept 3 – City Parks Staff, Stakeholder, and Community Input**





# Recommended Master Plan Update

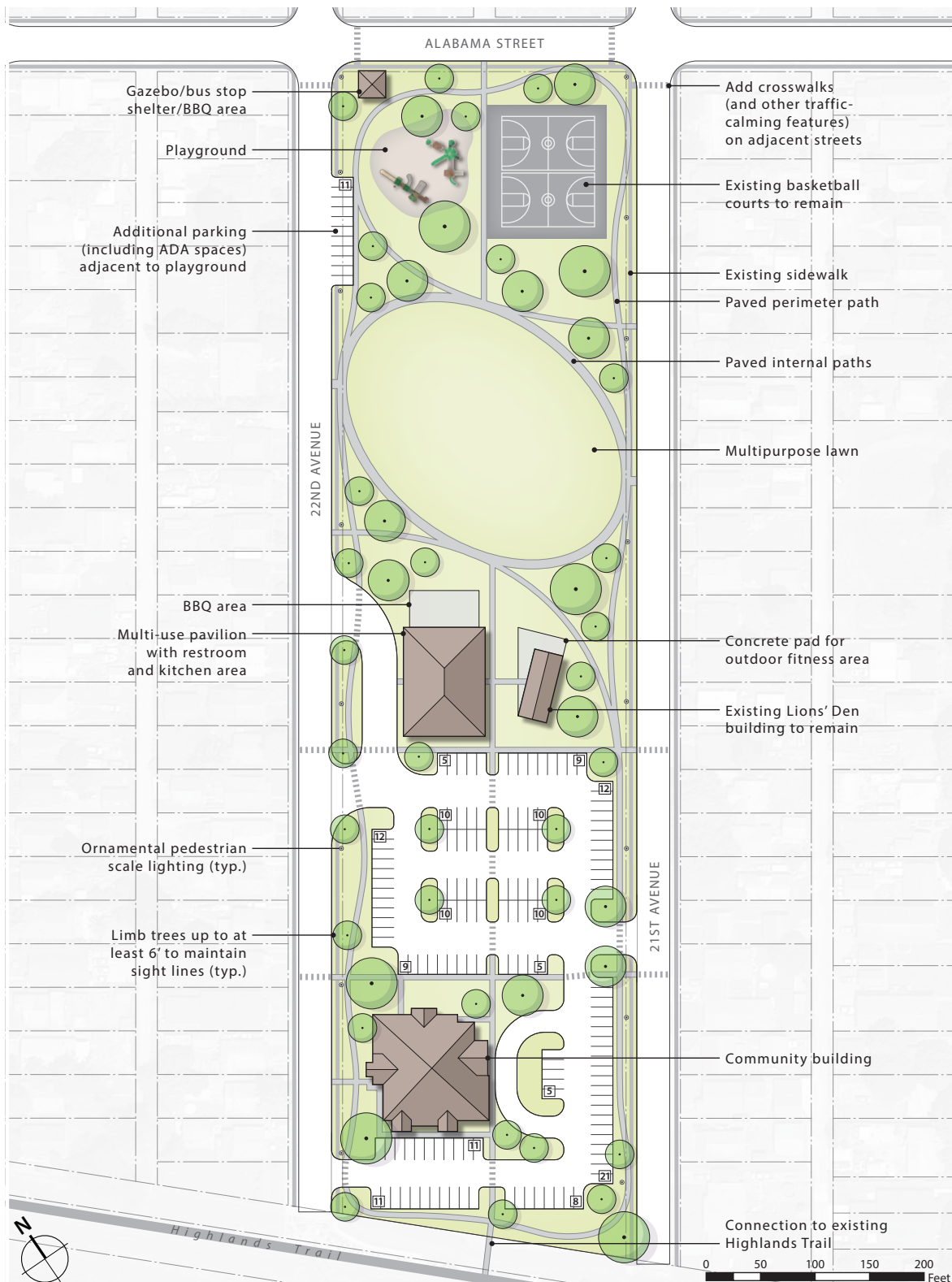
---

Through this planning and community involvement process, concepts have been created and commented upon by staff, stakeholders, and community members. In total there are four concepts to consider:

- » Original Master Plan from 2011
- » Concept 1 – City Parks Staff Input
- » Concept 2 – City Parks Staff and Stakeholder Input
- » Concept 3 – City Parks Staff, Stakeholder, and Community Input

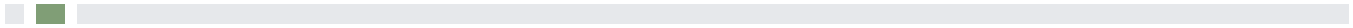
From these options, Concept 3 has emerged as the preferred option. This concept addresses all the concerns, issues, and opportunities that were identified during the planning process.





**Figure 8 | Preferred Master Plan Option**









SECTION 3

# Update Implementation







# Opinion of Construction Cost

---





# Action Items

---

As part of the planning process opportunities and implementation action items were identified to promote the new design of the Archie Anderson park.

- » Coordination with the Longview Police Department to house a police substation at the park.
- » Invest in the community by supporting the community groups who use and occupy the Archie Anderson Park.
- » Invest in the community by supporting the school system by constructing a gazebo along Alabama Street to be used as a bus shelter and a barbeque picnic area.
- » Phasing of the construction may allow for temporary uses such as an off-leash dog park to be implemented until such phase would eliminate the temporary use.
- » Consider bleachers, either temporary or permanent, for the basketball tournaments throughout the year.
- » Determine if the internal pedestrian walkways will be gravel, asphalt, or concrete.







