

4.3

City of Longview Parks



7TH AVENUE PARK

Park A

LOCATION	920 7 TH AVENUE
ACREAGE	29.8 ACRES
PARK TYPES	CLASS II - NEIGHBORHOOD PARK
SERVICE AREA	CLASS IV - COMMUNITY PARK
	CLASS V - REGIONAL PARK
	½ MILE/2 MILE/½ HOUR DRIVE

DESCRIPTION

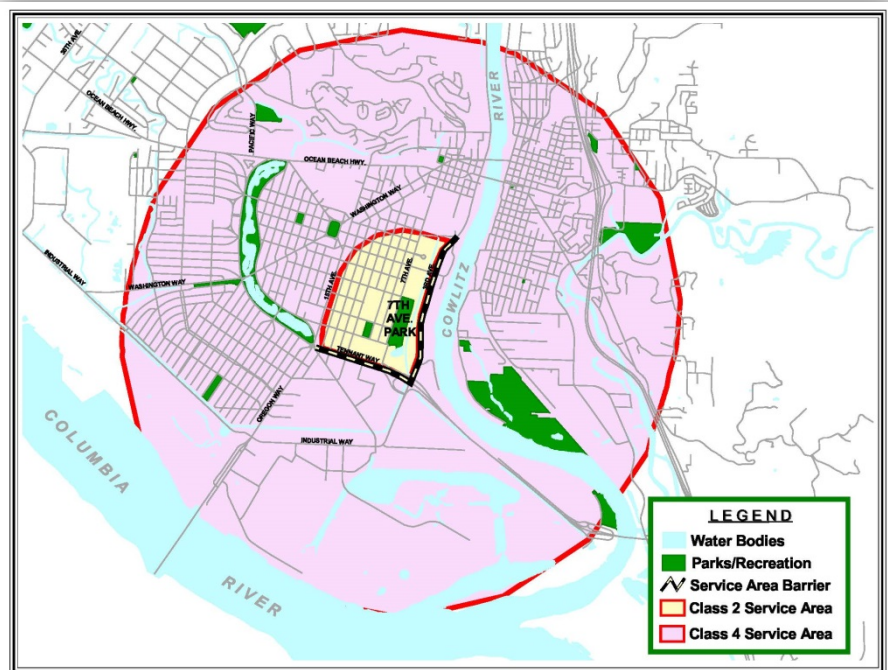
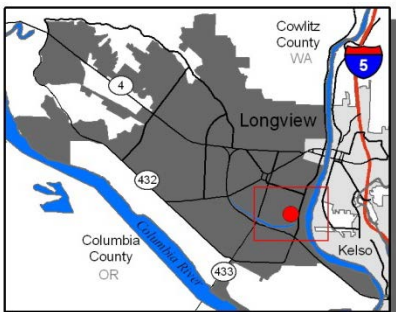
Park amenities include a playground, picnic tables, covered picnic area, concession building, storage facilities, restrooms, Tom Hutchinson Soccer Complex, and softball fields. The park is situated between 7th Avenue and dikeing district property. Two youth sports organizations run leagues and tournaments and provide field and building maintenance. The Class II park barriers include 3rd Avenue to the East and Tennant Way to the South.

MANAGEMENT ISSUES AND RECOMMENDATIONS:

- Field lighting
- Artificial turf installation
- Water meter reduction
- Determining water usage between youth sports organizations and department
- Use park to add to the continuation of dike trail
- Picnic shelter upgrade

PLAYGROUND

- 2004 INSTALLED
- 2034 REPLACEMENT SCHEDULED





ALTRUSA PARK

Park B

LOCATION	SE CORNER OF SCHNEITER DR & BRANCH CREEK DRIVE
ACREAGE	5.6 ACRES
PARK TYPES	CLASS II - NEIGHBORHOOD PARK
SERVICE AREA	¼ - ½ MILE

DESCRIPTION

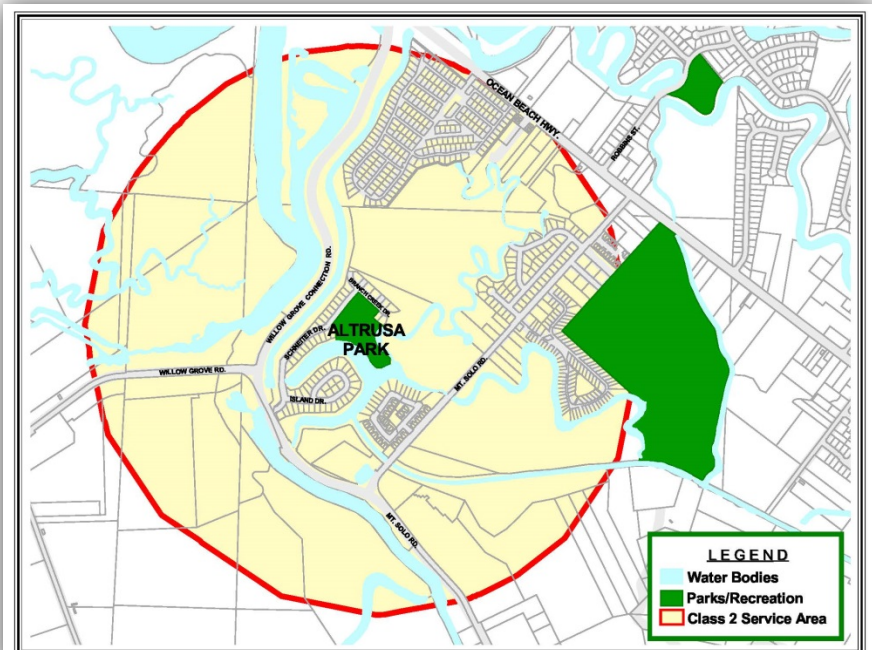
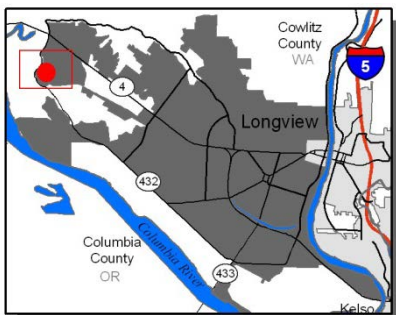
A 5.6 acre site with playground equipment, basketball court, picnic shelter, and benches. It also includes 1.3 miles of nature trails along the slough which is a partnership with the Diking District via a recreation use agreement between the entities for maintenance.

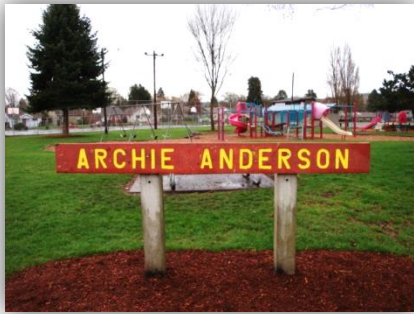
MANAGEMENT ISSUES AND RECOMMENDATIONS:

- Water tap
- Irrigation system for development of sports field
- Drinking fountain with pet water
- Expand and upgrade walking path
- Erosion control around dike berm
- Continuation of trail in new developments

PLAYGROUND

- **2008 INSTALLED**
- **2038 REPLACEMENT SCHEDULED**





ARCHIE ANDERSON PARK

Park C

LOCATION
ACREAGE
PARK TYPES
SERVICE AREA

BETWEEN 21ST & 22ND AT ALABAMA
6.33 ACRES
CLASS II – NEIGHBORHOOD PARK
CLASS IV - COMMUNITY PARK
CLASS V - REGIONAL PARK
½ MILE/2 MILE/½ HOUR DRIVE

DESCRIPTION

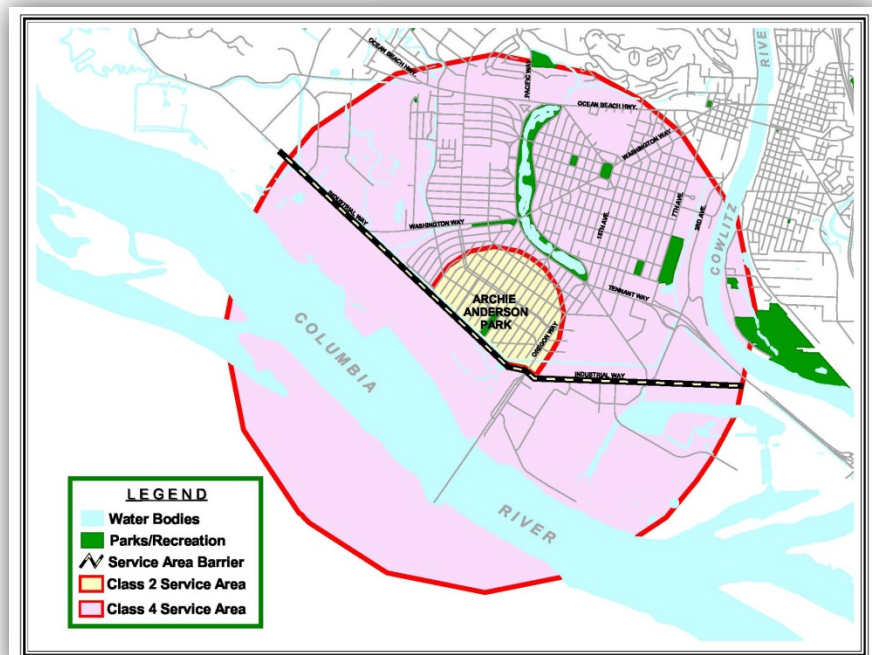
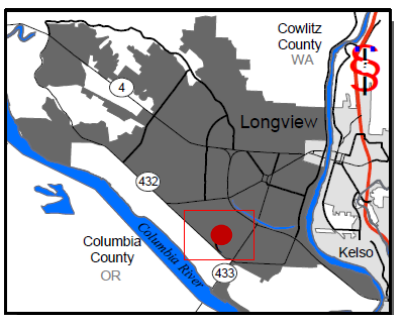
The park has new lighted outdoor basketball courts, playground equipment, baseball field, hard court area, picnic tables, restrooms, and parking lot. The park provides access to the 1.3 miles paved Highlands Trail along Industrial Way. The Class II park barriers include Industrial Way to the south and Oregon Way to the east.

MANAGEMENT ISSUES AND RECOMMENDATIONS:

- Continued partnership with Highlands Neighborhood Association
- Master plan update
- Water main line replacement
- Replace restrooms
- Installation of additional solar lighting
- Asphalt parking lot to access Highlands Trail

PLAYGROUND

- **1996 INSTALLED**
- **2017 REPLACEMENT SCHEDULED**





BAILEY PARK

Park D

LOCATION	SE CORNER OF 34 TH AND OAK ST.
ACREAGE	.75 ACRES
PARK TYPES	CLASS I - NEIGHBORHOOD PLAY LOT
SERVICE AREA	¼ MILE

DESCRIPTION

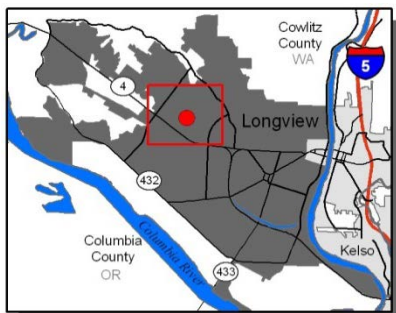
A .75 acre site located on the S. E. corner of the intersection of 34th Avenue and Oak Street, north of Ocean Beach Highway. The park has playground equipment, a hard court, picnic shelter and open play area. There are no natural or man-made barriers to the service area.

MANAGEMENT ISSUES AND RECOMMENDATIONS:

- Park redesign for maximization
- Water tap for drinking/pet fountain

PLAYGROUND

- 1997 INSTALLED
- 2020 REPLACEMENT SCHEDULED





CLONEY PARK

Park E

LOCATION
ACREAGE
PARK TYPES
SERVICE AREA

**SW CORNER OF WASHINGTON WAY AND
NICHOLS BLVD**
5.1 ACRES
CLASS II – NEIGHBORHOOD PARK
CLASS IV - COMMUNITY PARK
½ MILE/2 MILE

DESCRIPTION

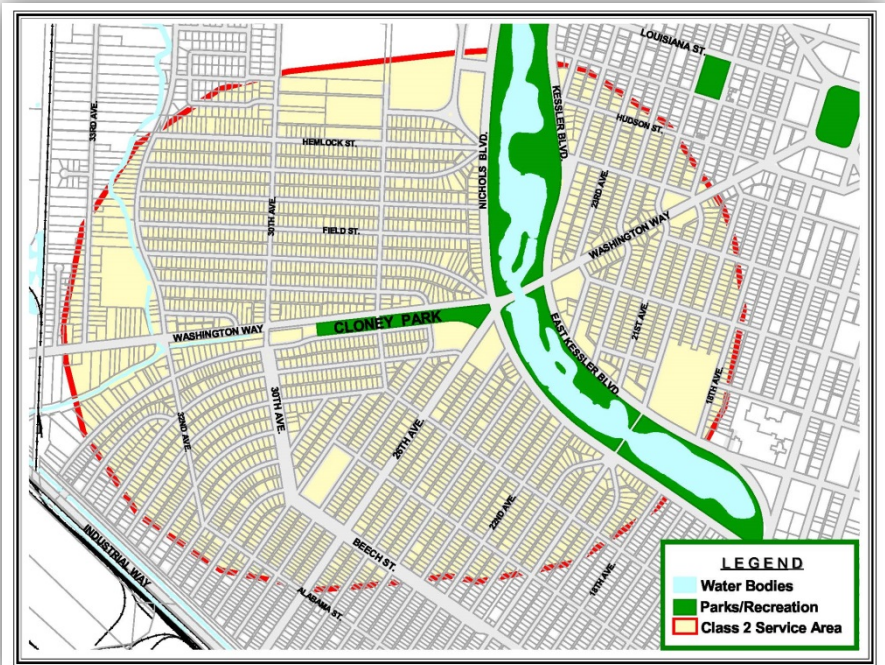
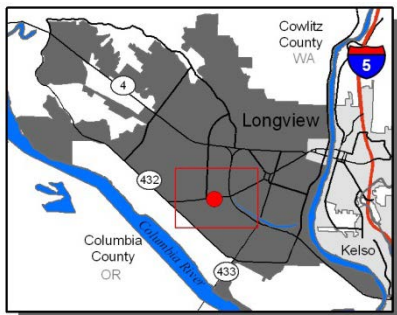
The park has playground equipment, skate park painted with geometric patterns, BMX bike track, picnic shelter, .25 mile paved walk/bike path, open play area, and recreation and parks administration buildings. This area serves as a neighborhood park, but also includes amenities not found elsewhere in the community in which patrons would commute to participate in the activities.

MANAGEMENT ISSUES AND RECOMMENDATIONS:

- Trail upgrade
- Shelter replacement
- Drainage for BMX park
- Resurface of skate bowl
- Bleacher installation
- Tree replacement
- Drinking fountain replacement

PLAYGROUND

- 1997 INSTALLED
- 2019 REPLACEMENT SCHEDULED





COMMUNITY GARDENS

Park F

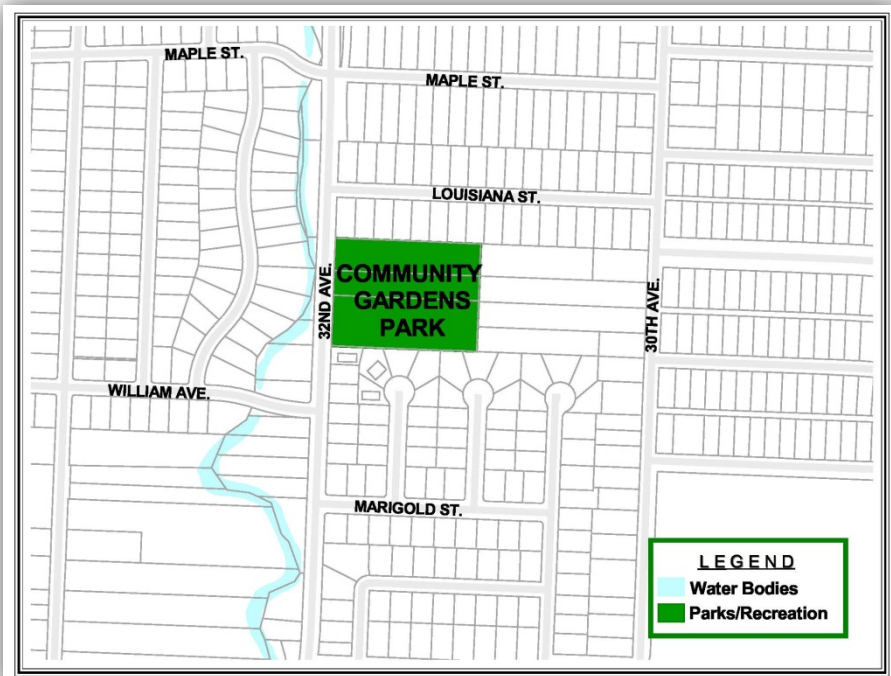
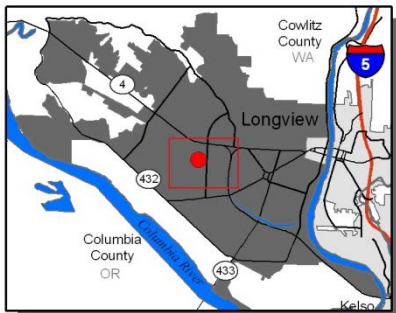
LOCATION	32ND AVENUE
ACREAGE	4 ACRES
PARK TYPES	CLASS VI – SPECIAL USE FACILITY
SERVICE AREA	COMMUNITY WIDE

DESCRIPTION

A 4 acre site used for irrigated community gardens. There are 125 year round garden plots, 21 plots that are 10ft x 40ft, and 104 plots that are 20ft x 40ft. There is a garden committee that works closely with the city to ensure success and to work with the gardeners. The gardens have been at capacity in recent years since working with the committee.

MANAGEMENT ISSUES AND RECOMMENDATIONS:

- Upgrade to irrigation system
- Enhance the road system
- Explore ways to minimize over watering
 - Water Timing
 - Water Reduction





GERHART GARDENS PARK

Park G

LOCATION	40 TENNANT WAY
ACREAGE	14 ACRES
PARK TYPES	CLASS III – NEIGHBORHOOD PASSIVE AREA
SERVICE AREA	CLASS V – REGIONAL PARK
	2 MILE/ ½ HOUR DRIVE OR MORE

DESCRIPTION

The park is situated along the Cowlitz River. It has playground equipment, boat launch, parking, horseshoe pits, swing set, picnic tables, portable restrooms, off leash dog park area with covered picnic shelter, and volleyball courts.

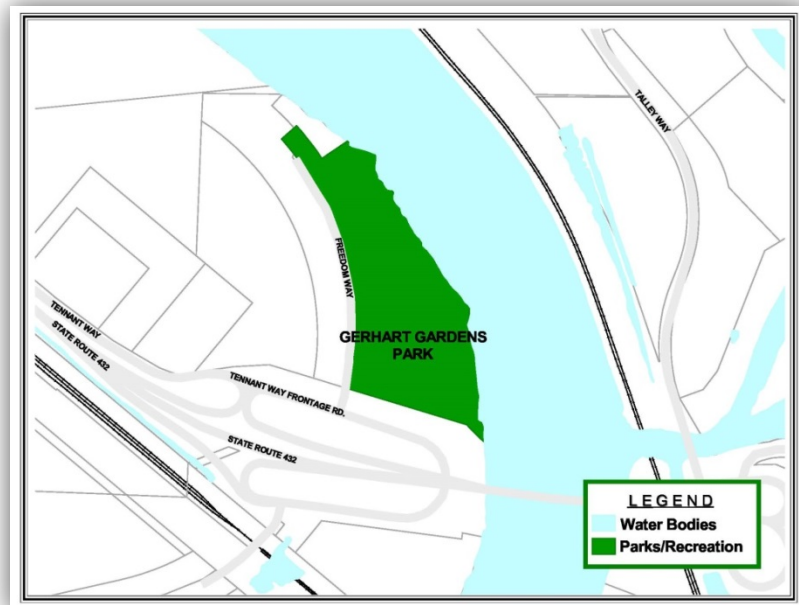
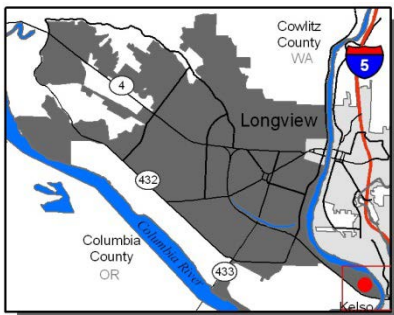
MANAGEMENT ISSUES AND RECOMMENDATIONS:

- Boat ramp installation
- River dredging
- Parking lot resurfacing
- Fish cleaning station installation
- Explore restroom options
- Tree and blackberry clean up
- Explore ways to enhance safety
- Trail expansion and connection from park to diking district
- Planning for the installation of a RV campground and amenities



PLAYGROUND

- **2015 SWING SET INSTALLED**
- **No additional playground scheduled**





JOHN NULL PARK

Exhibit H

LOCATION	2650 PACIFIC
ACREAGE	29.8 ACRES
PARK TYPES	CLASS II - NEIGHBORHOOD PARK
SERVICE AREA	CLASS IV - COMMUNITY PARK
	CLASS V - REGIONAL PARK
	½ MILE/2 MILE/½ HOUR DRIVE

DESCRIPTION

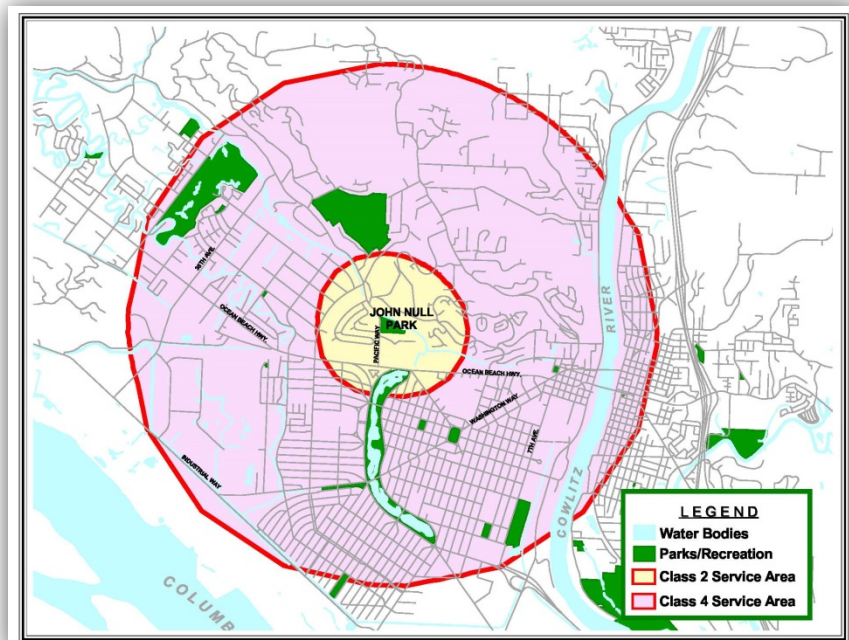
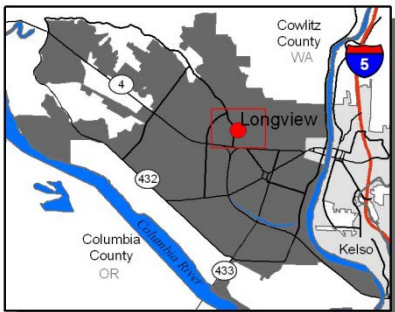
A 11 acre site with playground equipment, baseball fields, concession stand, batting cages, lighted tennis courts, pickleball courts, picnic tables, open play area, parking lot, and restrooms. A youth sports organization runs leagues and tournaments and provides field and building maintenance.

MANAGEMENT ISSUES AND RECOMMENDATIONS:

- Tennis court resurface
- Tree cleanup
- Picnic shelter installation
- Drinking found with pet water
- Install path along dike
- Tennis light and control upgrade

PLAYGROUND

- 2009 INSTALLED
- 2039 REPLACEMENT SCHEDULED





LAKE SACAJAWEA PARK

Park I - A (Ocean Beach to Hemlock Street)

LOCATION
ACREAGE
PARK TYPES
SERVICE AREA

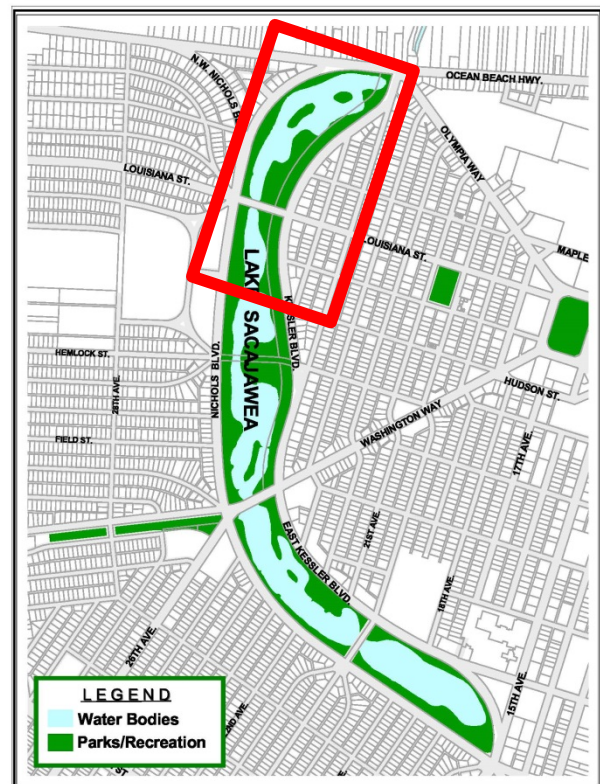
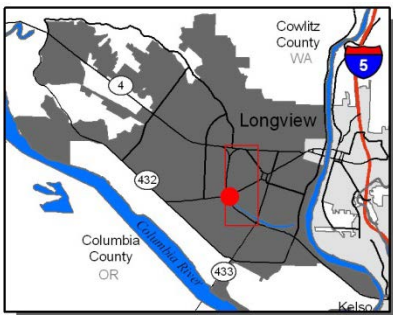
BETWEEN OCEAN BEACH HWY & HEMLOCK
127 ACRES (Total Park)
CLASS III - NEIGHBORHOOD PASSIVE
CLASS IV - COMMUNITY PARK
CLASS V - REGIONAL PARK
2 MILES TO ½ HOUR DRIVE

DESCRIPTION

The park encompasses a total of 127 acres. The area from Ocean Beach Highway to the Pedestrian bridge on the north end of the lake encompasses an arboretum setting with tree identification tags, lighted gravel trail, azalea and rhododendron gardens, Japanese garden, fishing docks, picnic sites and outdoor rental areas.

MANAGEMENT ISSUES AND RECOMMENDATIONS:

- Develop reception area for rental at Japanese Island Overlook
- Update path on Japanese Island
- Additional lighting under Louisiana Bridge
- Picnic table replacement
- Lake bank erosion control
- Path drainage
- Continue to research new ways to Safeguard against vandalism on Japanese Island





LAKE SACAJAWEA PARK

Park I – B (Hemlock Street to Washington Way)

LOCATION
ACREAGE
PARK TYPES
SERVICE AREA

BETWEEN HEMLOCK & WASHINGTON WAY
127 ACRES (Total Park)
CLASS III – NEIGHBORHOOD PASSIVE
CLASS IV – COMMUNITY PARK
CLASS V – REGIONAL PARK
2 MILES TO ½ HOUR DRIVE

DESCRIPTION

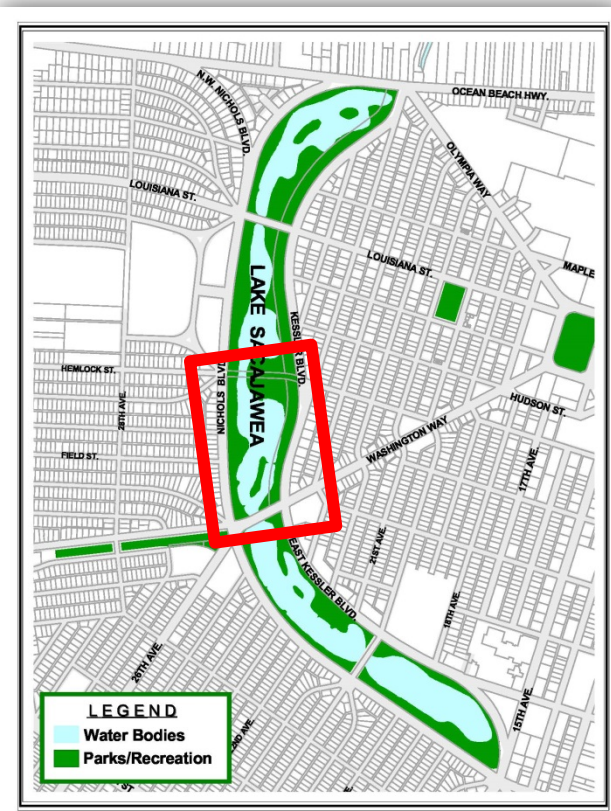
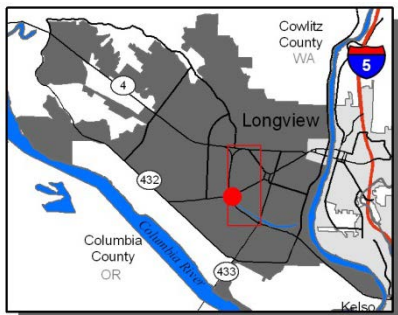
The park encompasses a total of 127 acres. The area from Hemlock Plaza to the Washington Way bridge in the middle of the lake encompasses is the heart of the park. Many community events are held within this area. This area includes open play space, lighted gravel trail, Hemlock Plaza playground, Martin Dock, Lion's Island, fishing docks, perennial garden, bronze sculptures, picnic sites, flag pole, boating hand launch, restroom facility, and lake concessionaire location.

MANAGEMENT ISSUES AND RECOMMENDATIONS:

- Remove and replace bathrooms
- Reconstruct Lion's Island dock
- Renovate Lion's Island Shelter
- Update and maintenance of Lion's Island Holiday Displays
- Replace well pump
- Picnic table replacement
- Path drainage
- Upgrade of information signs
- Lake bank erosion control

PLAYGROUND – HEMLOCK PLAZA

- 2010 - INSTALLED
- 2040 - REPLACEMENT SCHEDULED





LAKE SACAJAWEA PARK

Park I - C (Washington Way to 15th Avenue)

LOCATION
ACREAGE
PARK TYPES
SERVICE AREA

BETWEEN WASHINGTON WAY & 15th AVE
127 ACRES (Total Park)
CLASS III - NEIGHBORHOOD PASSIVE
CLASS IV - COMMUNITY PARK
CLASS V - REGIONAL PARK
2 MILES TO ½ HOUR DRIVE

DESCRIPTION

The park encompasses a total of 127 acres. The area from Washington Way bridge to 15th Avenue is at the south end of the lake. This area of the lake has two facilities for rent, a building and picnic shelter. The building serves as the after school teen program site. This area of the lake includes Elk's Memorial Building and playground, lighted gravel trail, Lion's Shelter and playground, fishing docks, picnic sites, and two public restroom facilities.

MANAGEMENT ISSUES AND RECOMMENDATIONS:

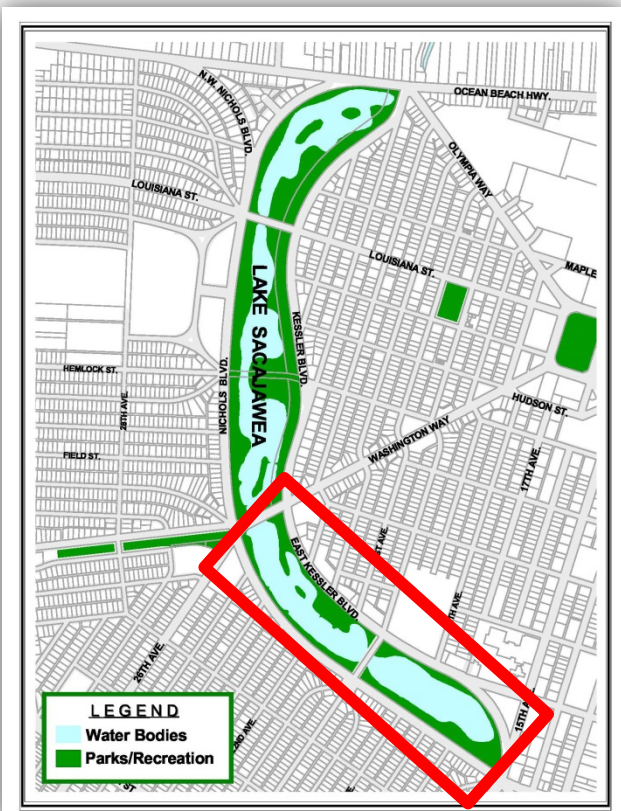
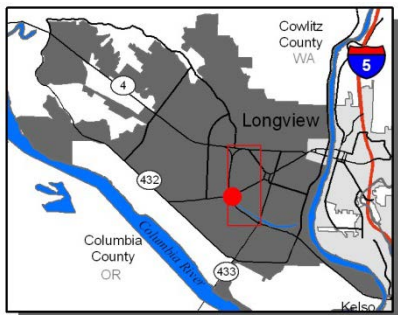
- Remove and replacement restrooms
- Reconstruct docks
- Upgrade picnic shelter
- Path drainage
- Upgrade informational signage
- Install leaf grate at outlet of lake
- Path drainage
- Lake bank erosion control

PLAYGROUND - ELKS MEMORIAL

- 1998 - INSTALLED
- 2028 - REPLACEMENT SCHEDULED

PLAYGROUND - 17TH & NICHOLS

- 2002 - INSTALLED
- 2032 - REPLACEMENT SCHEDULED





MARK HOEHNE PARK

Park J

LOCATION	SE CORNER OF ROBINS ST & FINCH DR
ACREAGE	5 ACRES
PARK TYPES	CLASS II – NEIGHBORHOOD PARK
SERVICE AREA	¼ - ½ MILE

DESCRIPTION

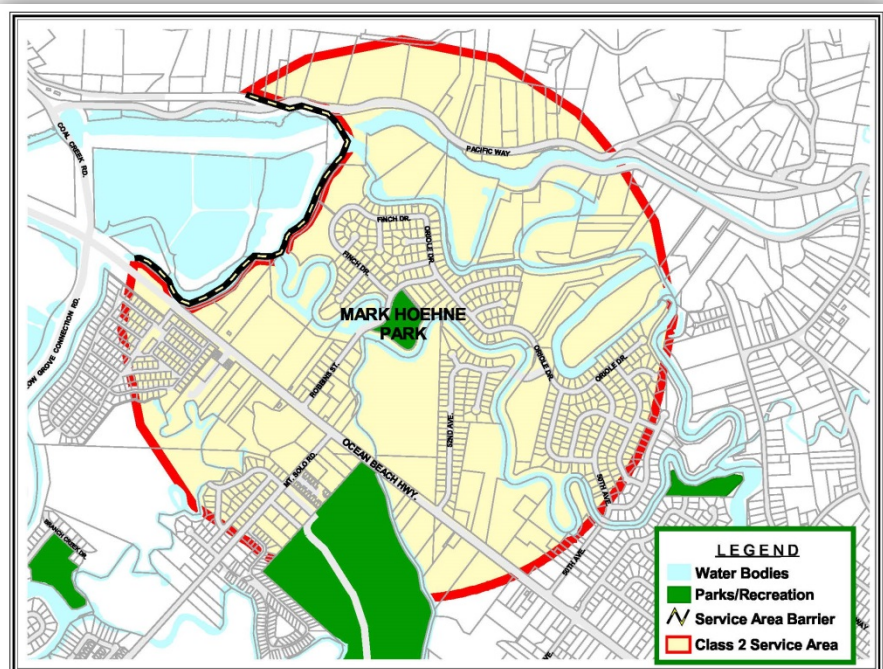
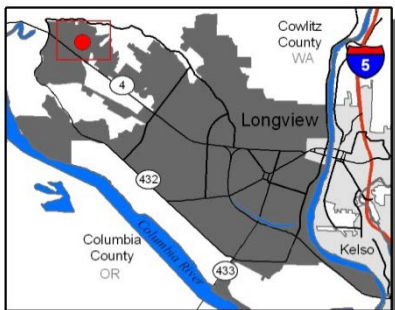
The park has playground equipment, small play space and picnic shelter. Design plans call for further development including tennis courts, basketball court, walking/bike path and open larger play area. A bridge across the ditch would open access to new residential development to the southeast.

MANAGEMENT ISSUES AND RECOMMENDATIONS:

- Install trail on dike
- Bridge across dike for access
- Water tap
- Sport field development

PLAYGROUND

- 1998 INSTALLED
- 2024 REPLACEMENT SCHEDULED





R.A. LONG PARK

Park K

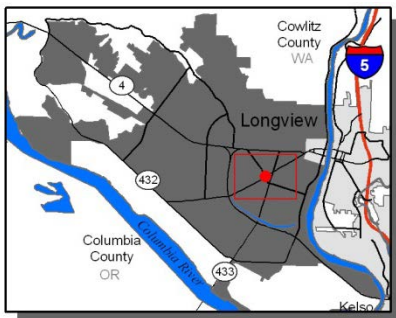
LOCATION	CIVIC CIRCLE
ACREAGE	5.5 ACRES
PARK TYPES	CLASS III – NEIGHBORHOOD PASSIVE
SERVICE AREA	2 MILES TO ½ HOUR DRIVE

DESCRIPTION

A 5.5 acre manicured site with mature landscaping, walking paths, sitting and picnic areas, historic plaques and monuments, and a newly constructed plaza area with fountain. This park sits in the heart of Longview's Civic Circle surrounded by historic building such as the Public Library, Post Office, Shay Locomotive, and Monticello Hotel as well as City Hall.

MANAGEMENT ISSUES AND RECOMMENDATIONS:

- Electrical Service Upgrade
- Water and irrigation upgrade
- Installation of water feature
- Installation of concrete plaza
- Plan for additional holiday celebrations
- Sidewalk repair and replacement
- Holiday lighting display upgrades





RALPH KELLOGG PARK

Park L

LOCATION	SW CORNER OF 33 RD AVE AND DOROTHY AVE.
ACREAGE	.5 ACRES
PARK TYPES	CLASS I – NEIGHBORHOOD PLAY LOT
SERVICE AREA	¼ MILE

DESCRIPTION

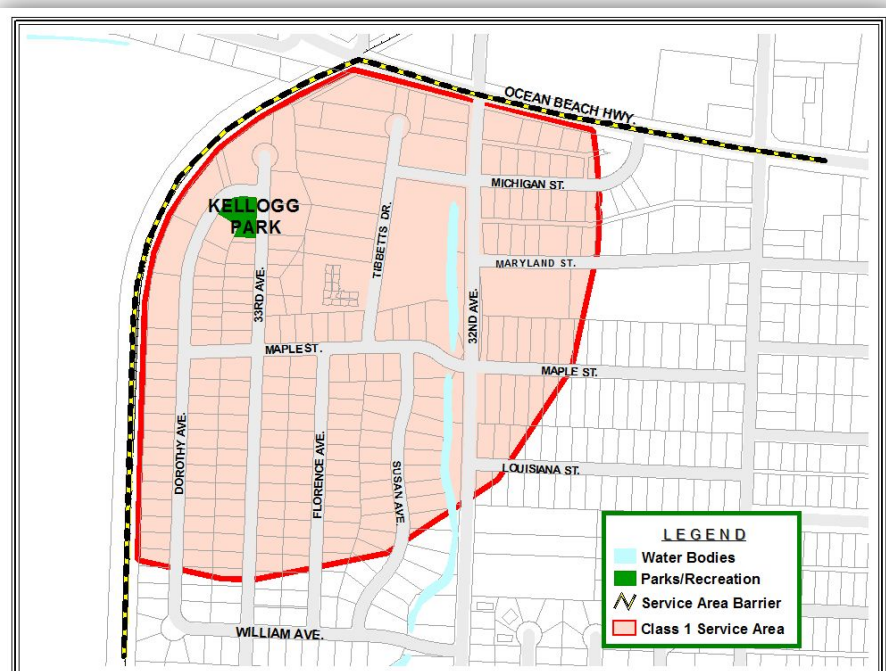
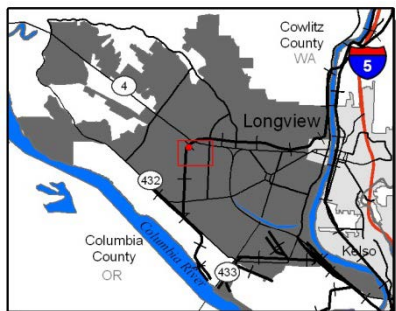
A .5 acre site located at the northern confluence of Dorothy and 33rd avenues, south of Ocean Beach Highway. The park has updated playground equipment and picnic tables. There are man-made barriers, due to automobile traffic flow and railroad use: the railroad tracks along the west side of Dorothy and 30th avenues to the east; Ocean Beach Highway to the north.

MANAGEMENT ISSUES AND RECOMMENDATIONS:

- No issues beyond playground replacement

PLAYGROUND

- 1996 INSTALLED
- 2018 REPLACEMENT SCHEDULED





ROTARY PARK

Park M

LOCATION	OAK STREET AT ROSEWOOD STREET
ACREAGE	1.28 ACRES
PARK TYPES	CLASS II – NEIGHBORHOOD PARK
SERVICE AREA	½ MILE

DESCRIPTION

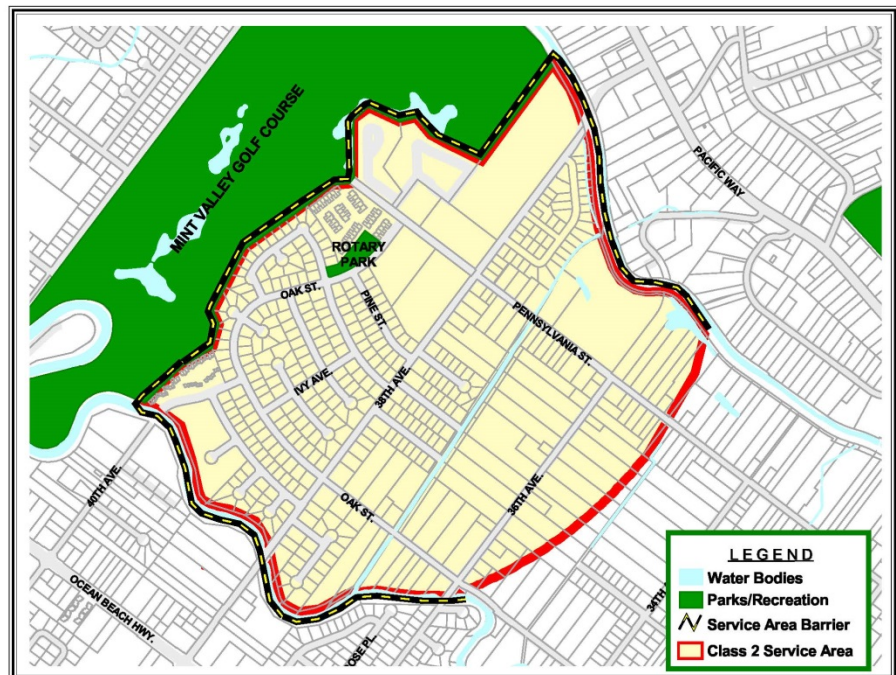
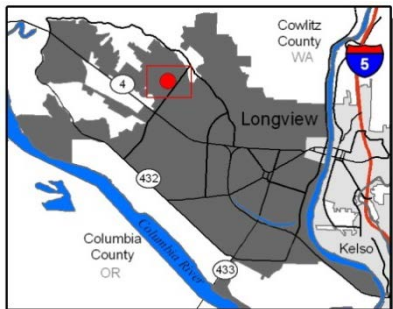
A 1.28 acre site located on the northwest corner of Rosewood and oak streets. The park has playground equipment, tennis courts and a picnic shelter. A fence line that runs in a north-south direction along the entire eastern edge of Mint Valley Golf Course is the identified barrier

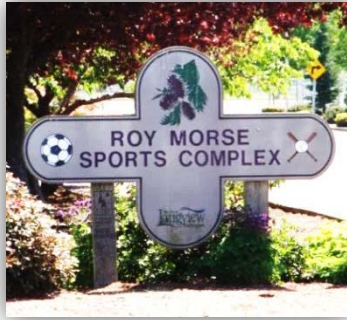
MANAGEMENT ISSUES AND RECOMMENDATIONS:

- Tennis court resurfacing

PLAYGROUND

- 1998 INSTALLED
- 2028 REPLACEMENT SCHEDULED





ROY MORSE PARK

Park N

LOCATION	REG SMITH DRIVE
ACREAGE	60 ACRES
PARK TYPES	CLASS IV – COMMUNITY PARK
SERVICE AREA	CLASS V – REGIONAL PARK
	2 MILES TO ½ HOUR DRIVE

DESCRIPTION

A 60 acre site with playground equipment, softball fields - two lighted, baseball fields, soccer fields, 9-hole disc golf course, open play areas, concession buildings, picnic facilities, horseshoe courts, maintenance garage, parking lots, paved trail, restrooms and nursery.

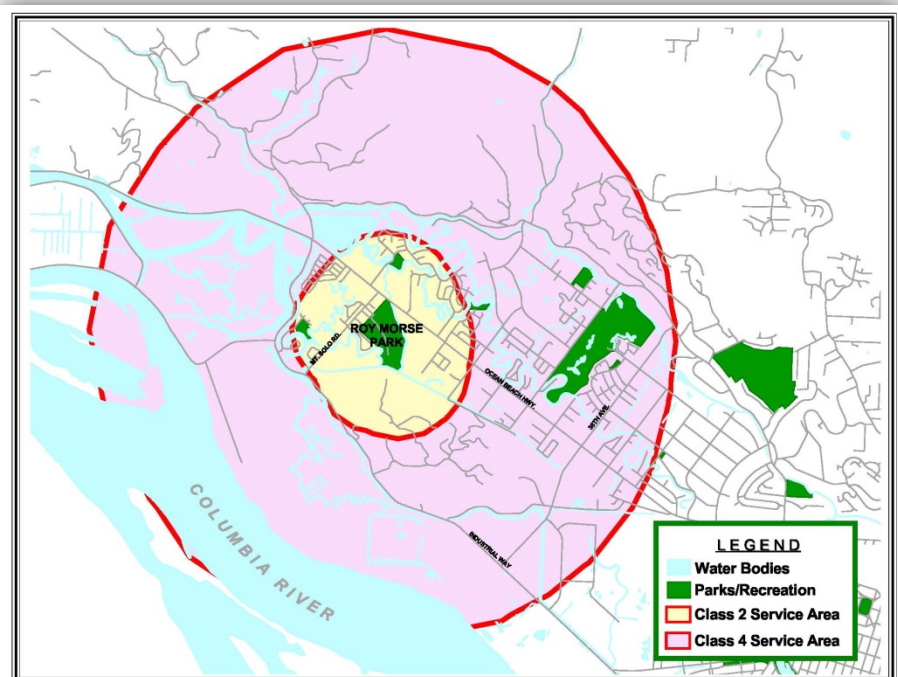
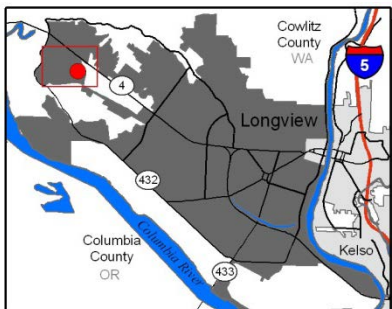
MANAGEMENT ISSUES AND RECOMMENDATIONS:

- Installation of artificial turf
- Field lighting
- Fill in lower lying areas
- Fortify soccer berms
- Extend fences on 3 and 4
- Covered picnic shelter
- Install walking path around the entire park
- Connect to dikeing district trails
- Restroom facility amenity upgrade
- Disc golf course extension



PLAYGROUND

- 2005 INSTALLED
- 2035 REPLACEMENT SCHEDULED





VANDERCOOK PARK

Park 0

LOCATION	1416 21 st AVENUE
ACREAGE	2.6 ACRES
PARK TYPES	CLASS II – NEIGHBORHOOD PARK
SERVICE AREA	½ MILE

DESCRIPTION

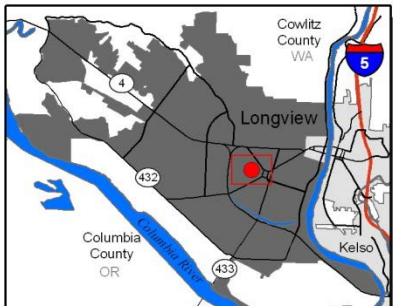
A 2.6 acre site located between Louisiana and Larch streets and 20th and 21st avenues, east of Lake Sacajawea and west of the Civic Center. The park has playground equipment, tennis courts, pickleball courts, shuffleboard, picnic tables and paved walking path.

MANAGEMENT ISSUES AND RECOMMENDATIONS:

- Tennis court resurface
- Volleyball court installation
- Sidewalk repair
- Shuffleboard court upgrade

PLAYGROUND

- 1998 INSTALLED
- 2028 REPLACEMENT SCHEDULED





VICTORIA FREEMAN PARK

Park P

LOCATION	NW CORNER DOUGLAS & 9TH AVE
ACREAGE	2.6 ACRES
PARK TYPES	CLASS II – NEIGHBORHOOD PARK
SERVICE AREA	½ MILE

DESCRIPTION

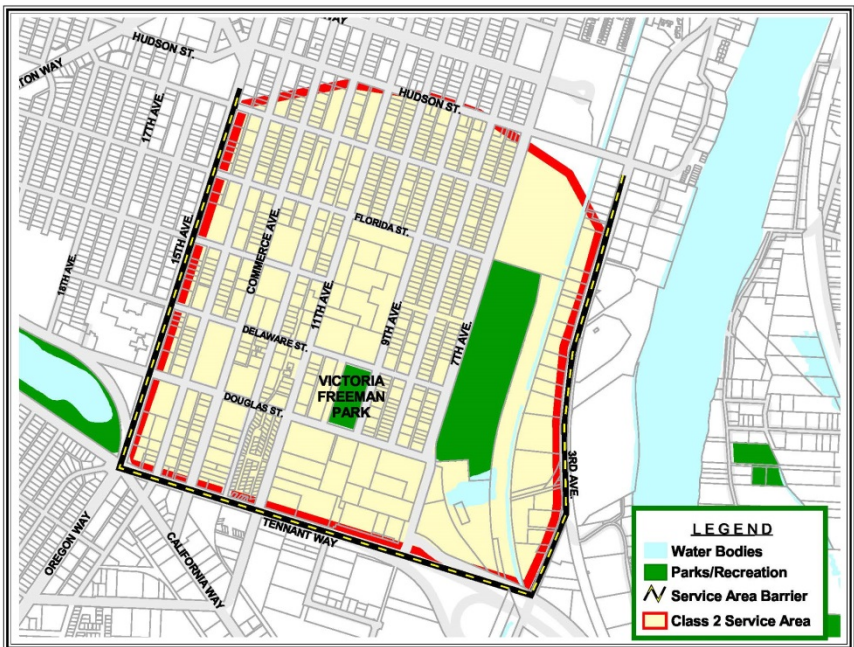
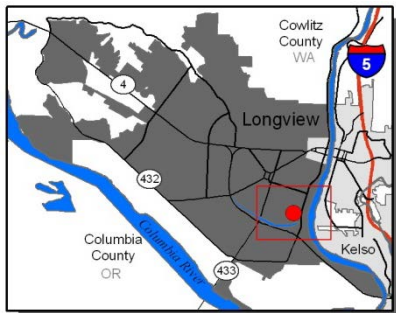
A 5.6 acre site located at the intersection of Douglas Street and 9th Avenue. The north end of the park abuts the McClelland Center. The park has playground equipment, softball field, informal soccer field, basketball court, picnic shelter, McClelland Center building and parking. Tennant Way on the south; that portion of Drainage Ditch #4 located along the eastern flank of 7th Avenue Park between Hudson Street on the north end and Tennant Way on the south end are man-made barriers.

MANAGEMENT ISSUES AND RECOMMENDATIONS:

- Shelter removal and replacement
- Tree replacement
- Top soil and turf enhancement

PLAYGROUND

- 1996 INSTALLED
- 2021 REPLACEMENT SCHEDULED





WINDEMERE PARK

Park Q

LOCATION	2418 48 th AVENUE
ACREAGE	3.4ACRES
PARK TYPES	CLASS II – NEIGHBORHOOD PARK
SERVICE AREA	½ MILE

DESCRIPTION

A 3.4 acre site located along the south side of the drainage ditch, in that subdivision located between 46th and 50th avenues, along the north side of Ocean Beach Highway. The park has playground equipment, picnic shelter and tables, and open play area. The drainage ditch along its north flank acts as a man-made barrier.

MANAGEMENT ISSUES AND RECOMMENDATIONS:

- Trail installed around park
- Bridge to connect housing developments

PLAYGROUND

- 1997 INSTALLED
- 2023 REPLACEMENT SCHEDULED

