








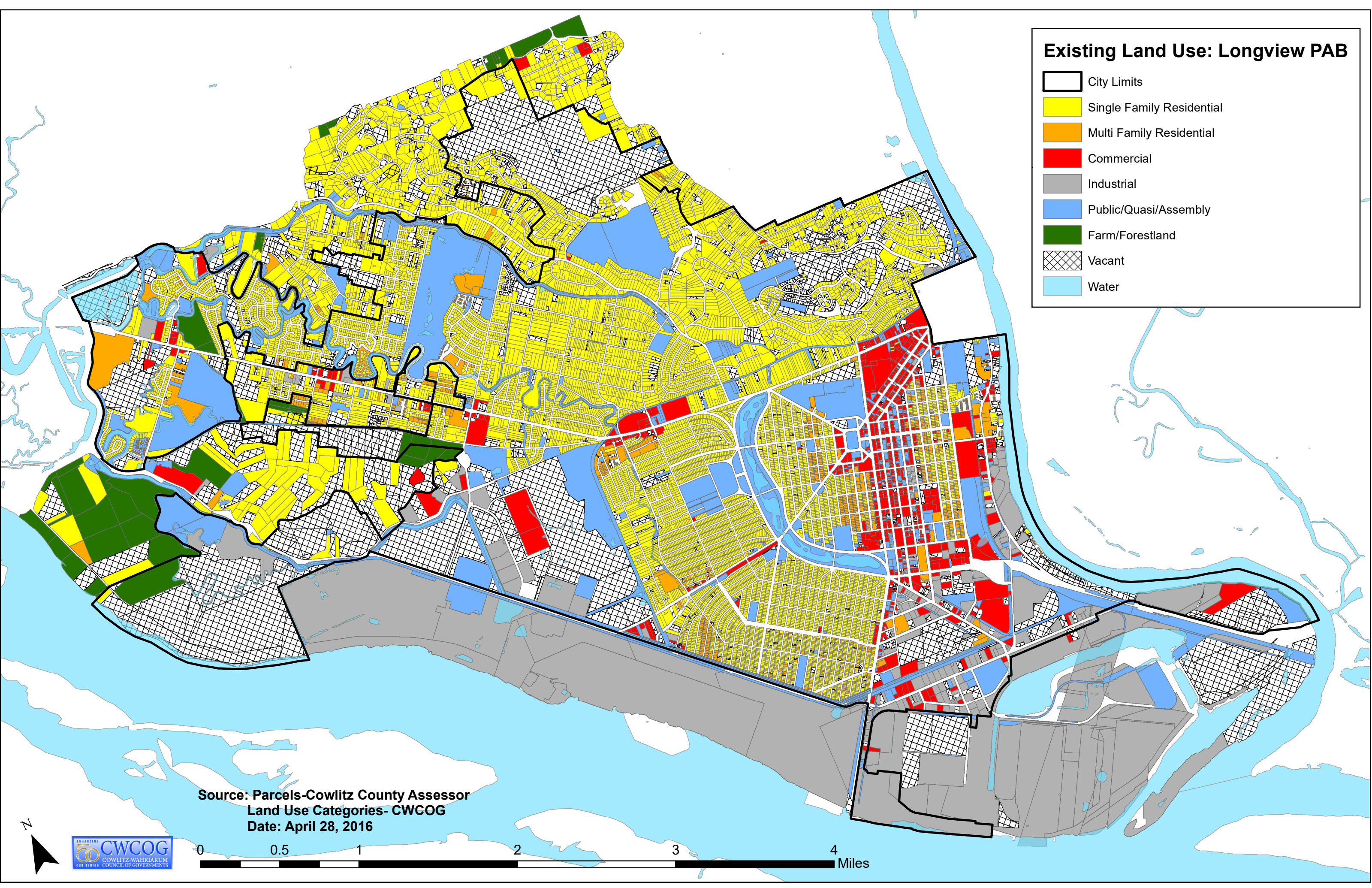


Existing Land Use: Longview PAB

-  City Limits
-  Single Family Residential
-  Multi Family Residential
-  Commercial
-  Industrial
-  Public/Quasi/Assembly
-  Farm/Forestland
-  Vacant
-  Water



Source: Parcels-Cowlitz County Assessor
 Land Use Categories- CWCOG
 Date: April 28, 2016

