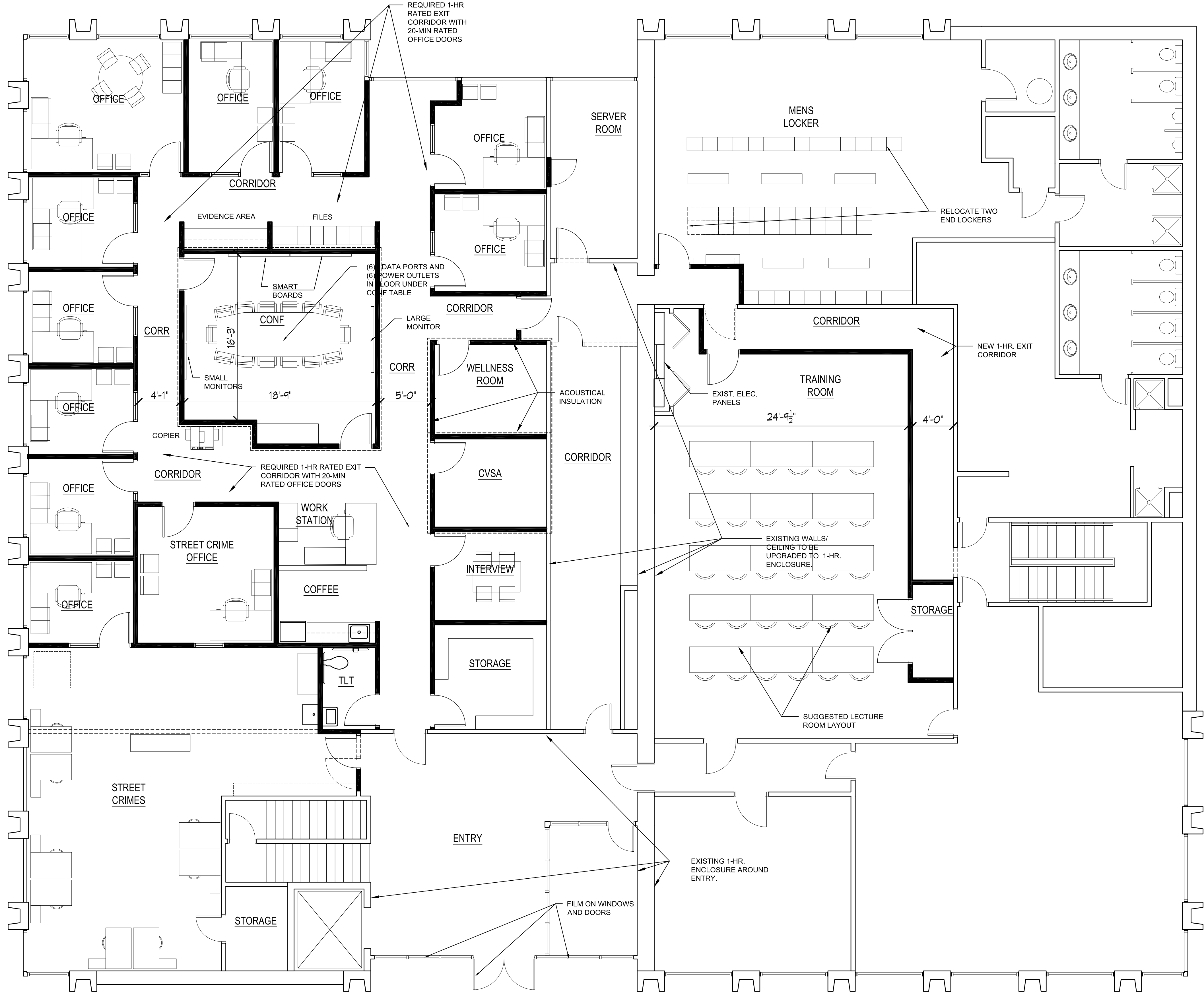


MARK	DATE	DESCRIPTION



### OPTION 1

- TO COMPLY WITH THE BUILDING AND FIRE DEPT.'S INTERPRETATION OF THE CODE REQUIREMENTS FOR EGRESS, THE FOLLOWING TWO CONDITIONS MUST BE ADDRESSED:
- FOR SEPARATION OF EXITS, A 1-HR RATED EXIT CORRIDOR HAS BEEN CREATED INSIDE OF THE EXISTING TRAINING ROOM.
  - THE INTERNAL HALLWAY AROUND THE CONFERENCE ROOM MUST BE RATED AS A 1-HR EXIT CORRIDOR WITH ALL OF THE OFFICE DOORS RATED AS 20-MIN. WITH CLOSERS AND GASKETS. THIS IS BECAUSE THE BUILDING IS NON-SPRINKLERED AND THE 23-COUNT OCCUPANT LOAD FOR THE CONFERENCE ROOM COMBINED WITH THE 23+ COUNT OCCUPANTS FOR SURROUNDING OFFICES EXCEEDS 30.
- + THIS OPTION PRESERVES THE ORIGINAL LAYOUT WITH THE CONFERENCE ROOM IN THE CENTER OF THE OFFICES.  
- THE 48" EXIT CORRIDOR REDUCES THE SIZE OF THE TRAINING ROOM.  
- THIS OPTION ADDS A PREMIUM COST OF \$65,555 OVER OPTIONS 2 & 3.