

# SEWER PUMP STATION ELECTRICAL ENCLOSURES



City Council Workshop  
April 20, 2017

# Sewer System Summary

- The City operates 43 sewage pump stations.
- Fifteen stations constructed between 1955 and 1983 due for replacement
- Ten stations constructed in the 1990s due for upgrades or replacement
- Eighteen stations rebuilt since 2000
- Four stations in design for 2017 and 2018 replacement



# Pump Station Varieties



4802 Ocean Beach Highway



1900 33rd



4711 Merlin



2725 32nd



1403 Midland



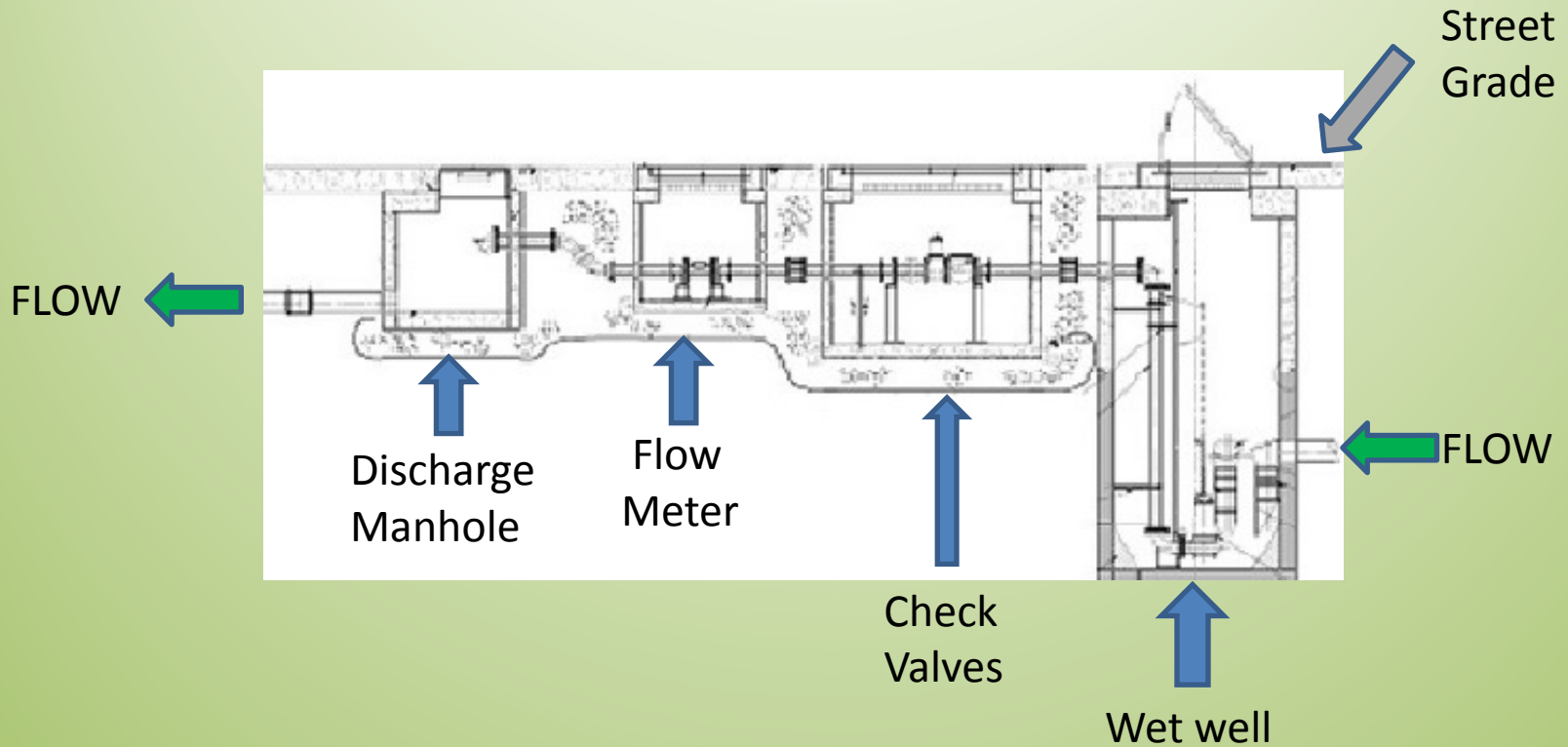
5345 Oriole



38<sup>th</sup> & Oak – Controls in vault

# Small Pump Station

## Below Grade Components



# Small Pump Station

## Above Grade Components

- Weatherproof electrical control cabinet
- Electrical air gap enclosure
- SCADA antenna
- Water supply backflow device
- Emergency power connection
- PUD meter
- Optional security and weather enclosure





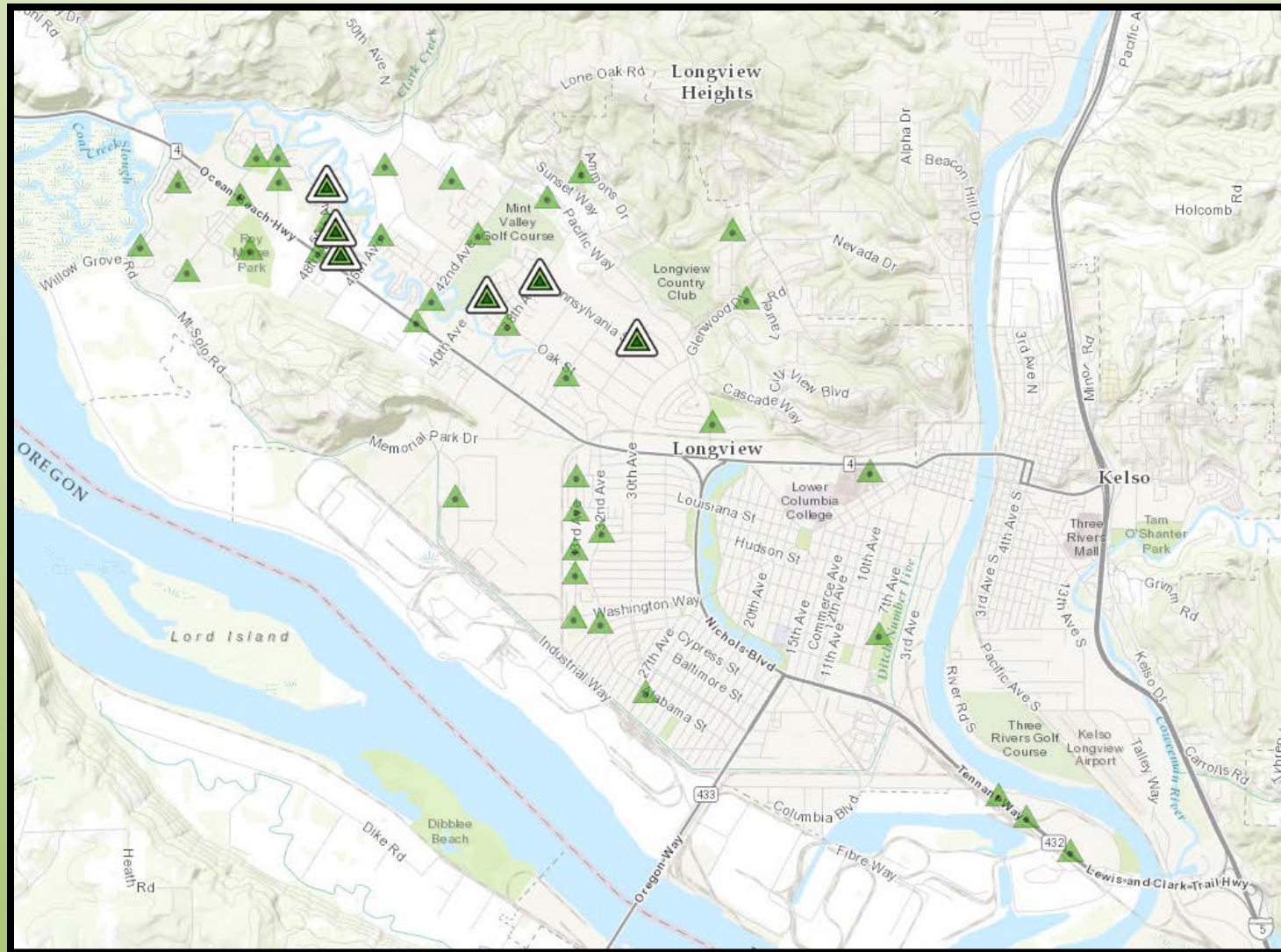
# Electrical Enclosure Siting Challenges

- Proximity to residence
- Line of sight between window and street
- Occupy notable portion of a property's street frontage
- Driveway line of sight
- Utility Conflicts
- Traffic safety during PS maintenance
- Worker safety during PS maintenance

➤ Six pump stations identified as challenging locations:

2725 32 <sup>nd</sup>	2626 38 <sup>th</sup>	4711 Merlin
2277 48 <sup>th</sup>	4014 Oak	2506 50th

# Pump Station Locations



Pump Stations



Challenging Sites for PS Upgrades



# Electrical Enclosure Siting Challenges



2725 32nd



2277 48th



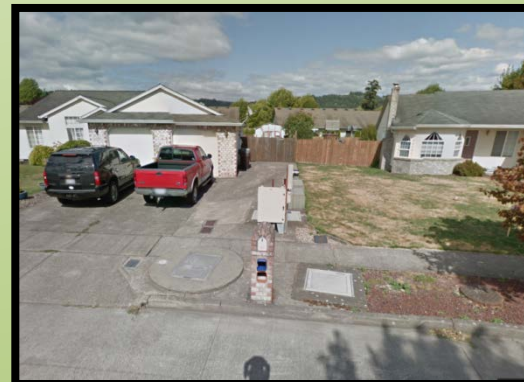
2626 38th



4014 Oak



4711 Merlin



2506 50th



# Concrete Block Enclosure Pros and Cons

## PROS

- Improves worker safety
- Increases component life
- Improves security
- Less industrial appearance

## CONS

- Increased facility footprint
- Increased height and width of visual barrier
- Additional expense – average cost \$20,000

# RECOMMENDATIONS

- Use three-sided masonry enclosures
- Omit enclosures where homeowners object or space is inadequate
- Landscape vegetation may be added to reduce visual impact of enclosure
- Enclosure color may be changed