

SR 432 / California Way / East Industrial Way Intersection Improvements

City Council Work Session

March 15, 2018

Jeff Cameron, Public Works Director

SR 432 / California Way / East Industrial Way Intersection Improvements

January 25, 2018 Workshop Summary

- SR 432/ California Way Intersection improvements identified in 2014 corridor study
- \$5.3M grant awarded based on concept below
- Council voted not to proceed with the project and accept the grant
- Realign California Way to create a single intersection
- Improve traffic signal operation
- Construct left turn lane curbing on SR 432 for access management



SR 432 / California Way / East Industrial Way Intersection Improvements

March 15, 2018 Work Session

- Explore alternatives for intersection alignment
- Property and Business owners near proposed project invited to participate in the work session
- Traffic engineering firm Kittelson and Associates invited to participate in the work session

SR 432 / California Way / East Industrial Way Intersection Improvements

At-Grade: Advanced to Level 2 Screening

SR 432/3rd Ave/Industrial Way/California Way
At-Grade Improvement – California Way/Industrial Way Single
Intersection



SR 432
Rail Realignment &
Highway Improvements Project



SR 432 / California Way / East Industrial Way Intersection Improvements

At-Grade: Advanced to Level 2 Screening

SR 432/3rd Ave/Industrial Way/California Way

At-Grade Improvement – Re-Align California Way



SR 432

Rail Realignment &
Highway Improvements Project



SR 432 / California Way / East Industrial Way Intersection Improvements

At-Grade: Dropped from consideration for level 2 screening

Node 2 – 3rd Ave/Industrial Way/SR 432

At-Grade: Separated Intersections



SR 432

Rail Realignment &
Highway Improvements Project



SR 432 / California Way / East Industrial Way Intersection Improvements

Grade-Separated: Advanced to Level 2 Screening

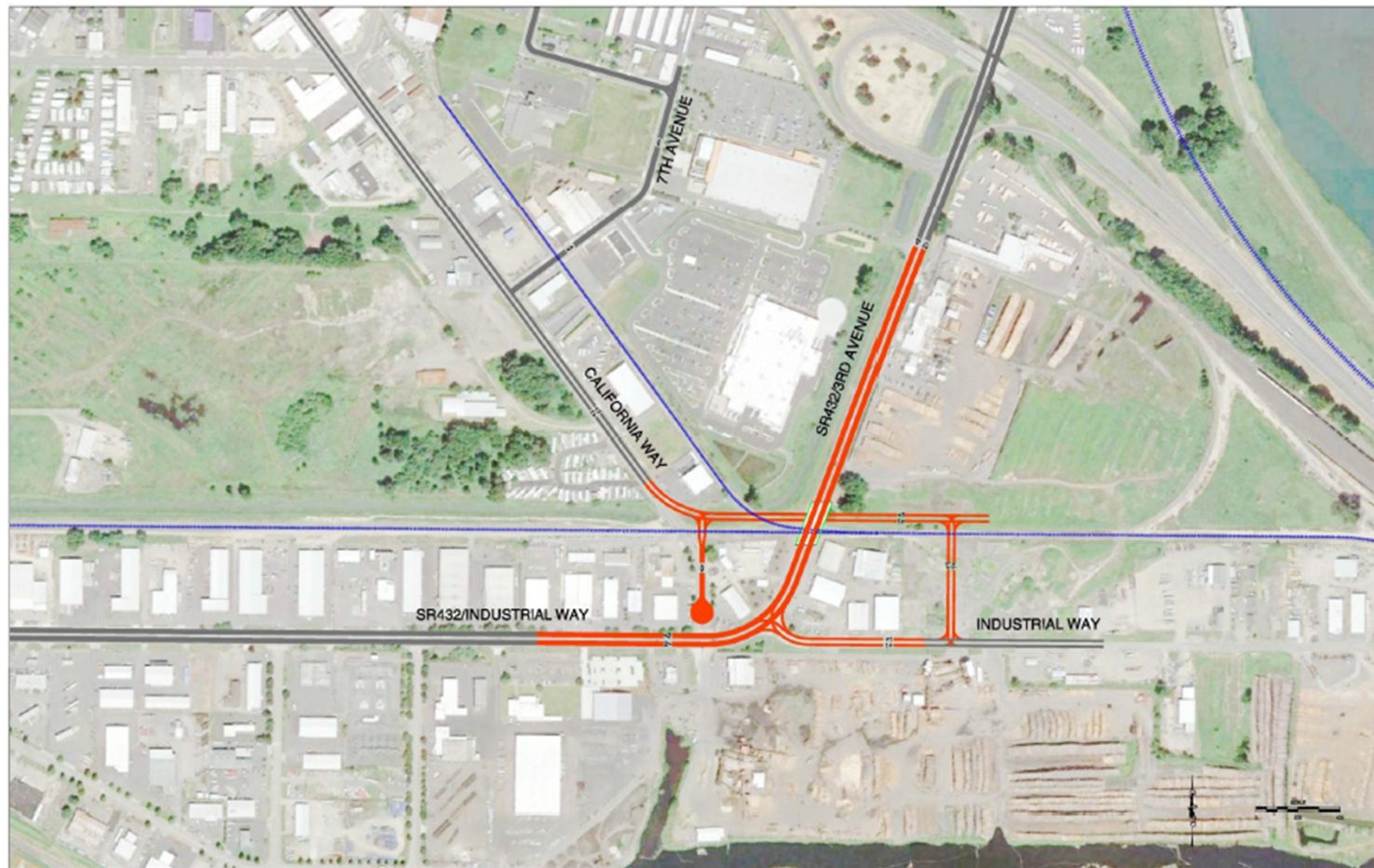
SR 432/3rd Ave/Industrial Way/California Way

Grade-Separated Improvement – SR 432 Alignment Option 2



SR 432

Rail Realignment &
Highway Improvements Project



SR 432 / California Way / East Industrial Way Intersection Improvements

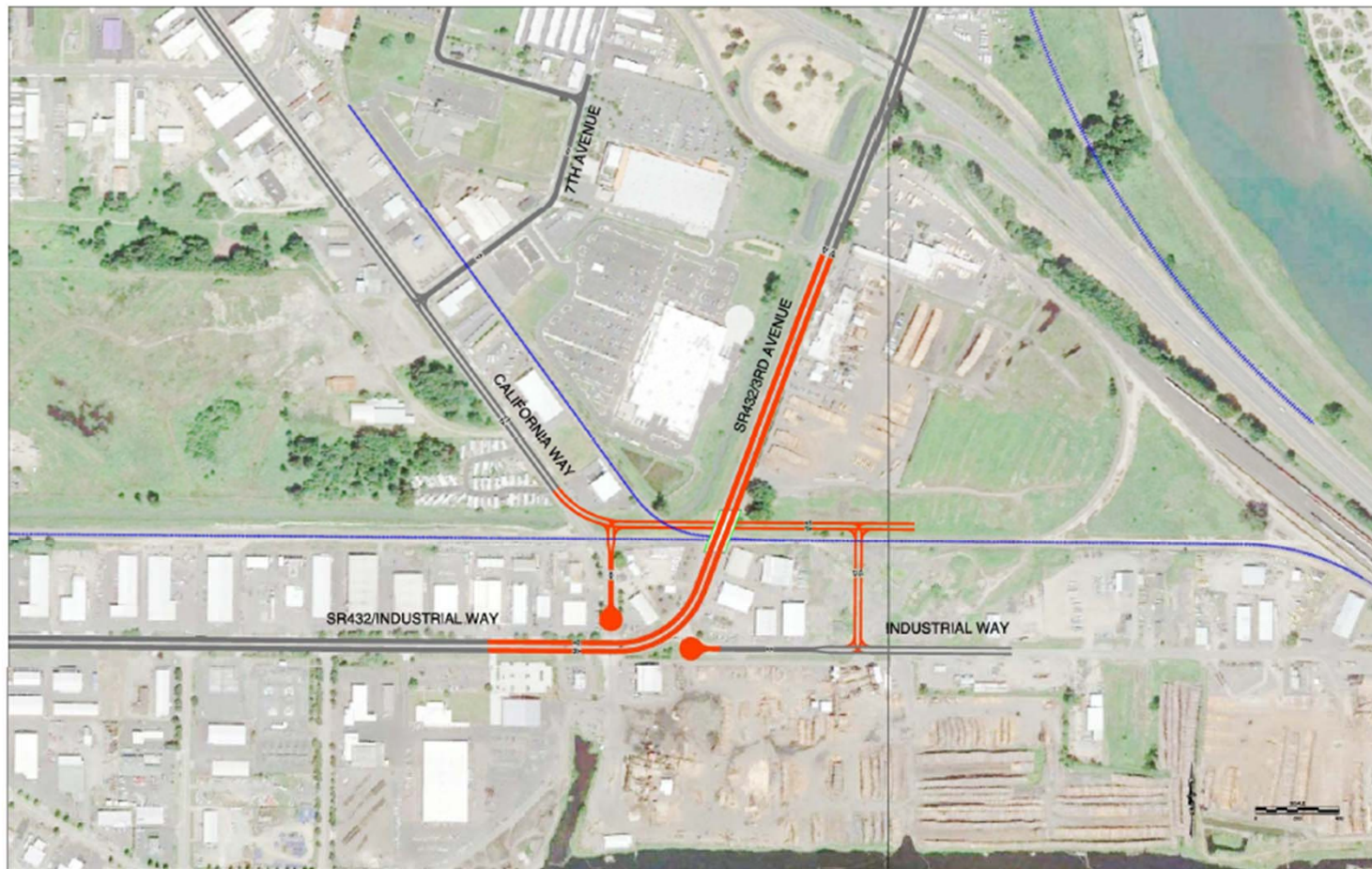
Grade-Separated: Dropped from consideration for level 2 screening

SR 432/3rd Ave/Industrial Way/California Way

Grade-Separated Improvement – SR 432 Alignment Option 1



SR 432
Rail Realignment &
Highway Improvements Project



SR 432 / California Way / East Industrial Way Intersection Improvements

Grade-Separated: Dropped from consideration for level 2 screening

SR 432/3rd Ave/Industrial Way/California Way

Grade-Separated Improvement – Eastern SR 432 Alignment



SR 432

Rail Realignment &
Highway Improvements Project



SR 432 / California Way / East Industrial Way Intersection Improvements

Grade-Separated: Dropped from consideration for level 2 screening

SR 432/3rd Ave/Industrial Way/California Way

Grade-Separated Improvement – Western SR 432 Alignment



SR 432

Rail Realignment &
Highway Improvements Project



SR 432 / California Way / East Industrial Way Intersection Improvements

Summary of Concepts not Advanced from 2014 Study - Level 1 Screening

3rd Ave/Industrial Way/SR 432

At-Grade

Separated Intersections

- Physical impacts to existing businesses near the California Way and Industrial Way intersections.
- Minimal improvement to existing access and circulation to/from existing businesses.

Grade-Separated

SR 432 Alignment

- Physical impacts to existing businesses along 3rd Avenue near California Way and Industrial Way.
- Diminishes access to/from existing businesses.
- Moderate/high magnitude of construction and overall cost.
-

Eastern SR 432 Alignment

- Physical impacts to existing businesses east of 3rd Avenue and near the California Way and Industrial Way intersections.
- Diminishes access to/from existing businesses.
- Moderate/high magnitude of construction and overall cost.

Western SR 432 Alignment

- Physical impacts to existing businesses east of 3rd Avenue and near the California Way and Industrial Way intersections.
- Diminishes access to/from existing businesses.
- Moderate/high magnitude of construction and overall cost.

SR 432 / California Way / East Industrial Way Intersection Improvements

Next Steps

- Work Session and Discussion
- Confirm or reject acceptance of \$5.3M federal funding for SR 432 / California Way project