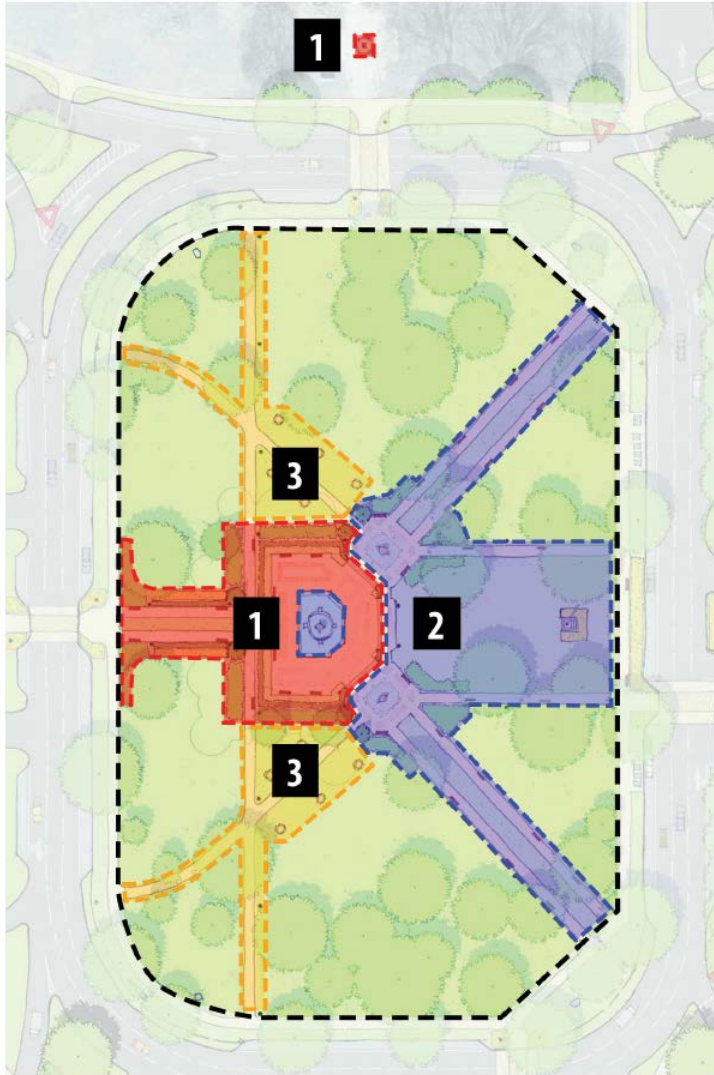


R.A. LONG PARK PLAZA RESTORATION

**Historic Preservation Commission
March 26, 2018**

Ivona Kininmonth, Staff Engineer

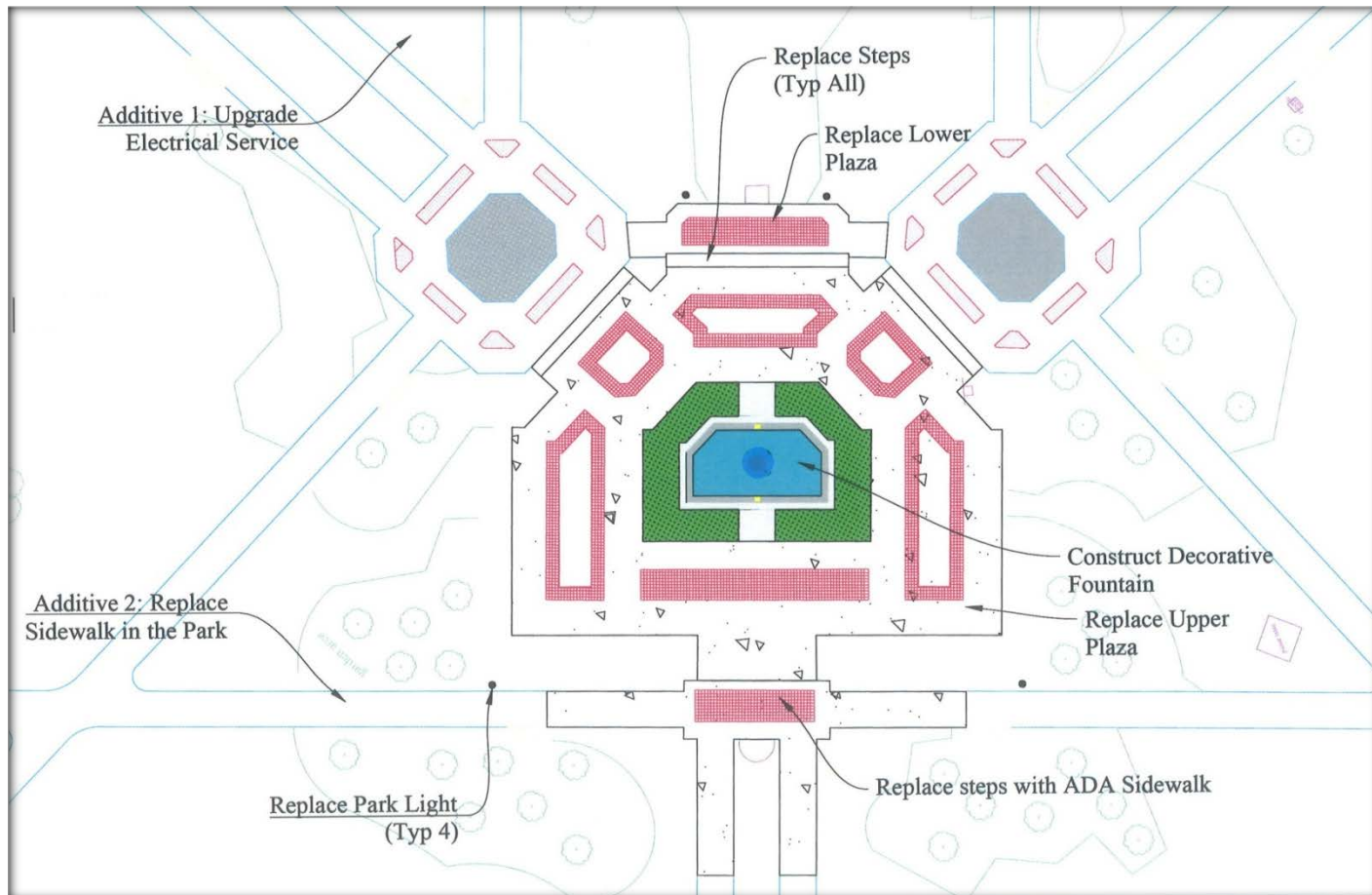
R.A. LONG PARK PLAZA RESTORATION – HISTORY



- RA Long Master Plan – completed 2010
 - Open house, public input, HPC, Project Longview and Park Board approval, Council adopted plan

R.A. LONG PARK PLAZA RESTORATION – HISTORY

- Phase 1 implementation
 - Relocate RA Long bust – completed 2015
 - Replace central concrete plaza, construct water fountain, provide ADA approach to plaza, lighting – project advertised in 2016, not awarded due to funding shortage



R.A. LONG PARK PLAZA RESTORATION – HISTORY

- Phase 1 Implementation
 - Central concrete plaza and portions of lower plaza removed to eliminate safety hazards – completed 2016



R.A. LONG PARK PLAZA RESTORATION – HISTORY

- Due to Budget Shortfall Options Considered for Park Amenities
 - Eliminate Fountain
 - Install Gazebo or Pavilion
 - Eliminate Concrete Plaza

RA LONG PARK PLAZA RESTORATION – HISTORY

Historic Preservation Commission Decisions on RA Long Park

1. Accepts regular concrete with texturing instead of colored concrete
2. Retain plaza elevation as is
3. Retain plaza shape / geometry as is
4. Retain scoring / texture of the concrete as is
5. Retain the hedge border around the plaza
6. Prefer oval or octagonal gazebo rather than pavilion
7. Approval of gazebo design and final concrete scoring / texture is required

RA LONG PARK PLAZA RESTORATION - HISTORY

City Council Decisions on RA Long Park

1. Gazebo is acceptable substitution for fountain
2. Include park lights replacement in the project
3. Include upgrade of electrical service in the project
4. Replace additional sidewalk in the park – additional funding allocated

R.A. LONG PARK PLAZA RESTORATION

REVISED COST ESTIMATE

Total Project Cost for Plaza Restoration ≈ \$715,000

❖ Engineering ≈ \$60,000

❖ Construction ≈ \$570,000

- Plaza ≈ \$379,000
- Gazebo ≈ \$74,000
- Park Lighting ≈ \$43,500
- Power receptacles ≈ \$17,500
- Elec. Service ≈ \$56,000

❖ Contingency ≈ \$85,000

Replace Defective Sidewalk in Park ≈ \$100,000

Total Project Cost \$815,000

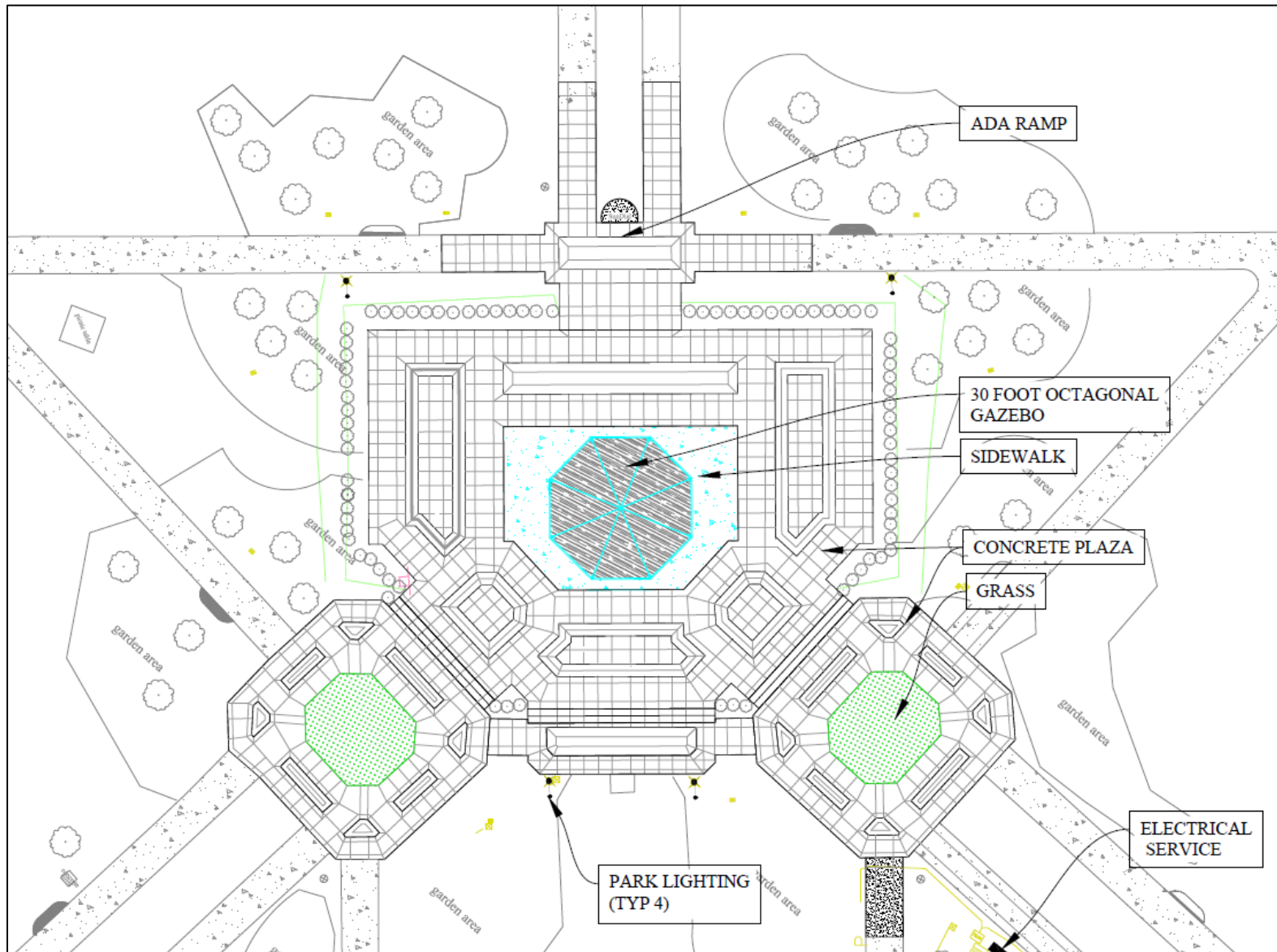
R.A. LONG PARK PLAZA RESTORATION

PRELIMINARY SCHEDULE

- HPC, Parks Board, PL, Council Approval Feb-May 2018
- 05-05 Executive Order Review Feb-May 2018
(Cultural Resources Review)
- Project Design Complete June 2018
- Project out to Bid June 2018
- Project Award July 2018
- Start Construction Mid-August 2018
- Project Completion January 2019

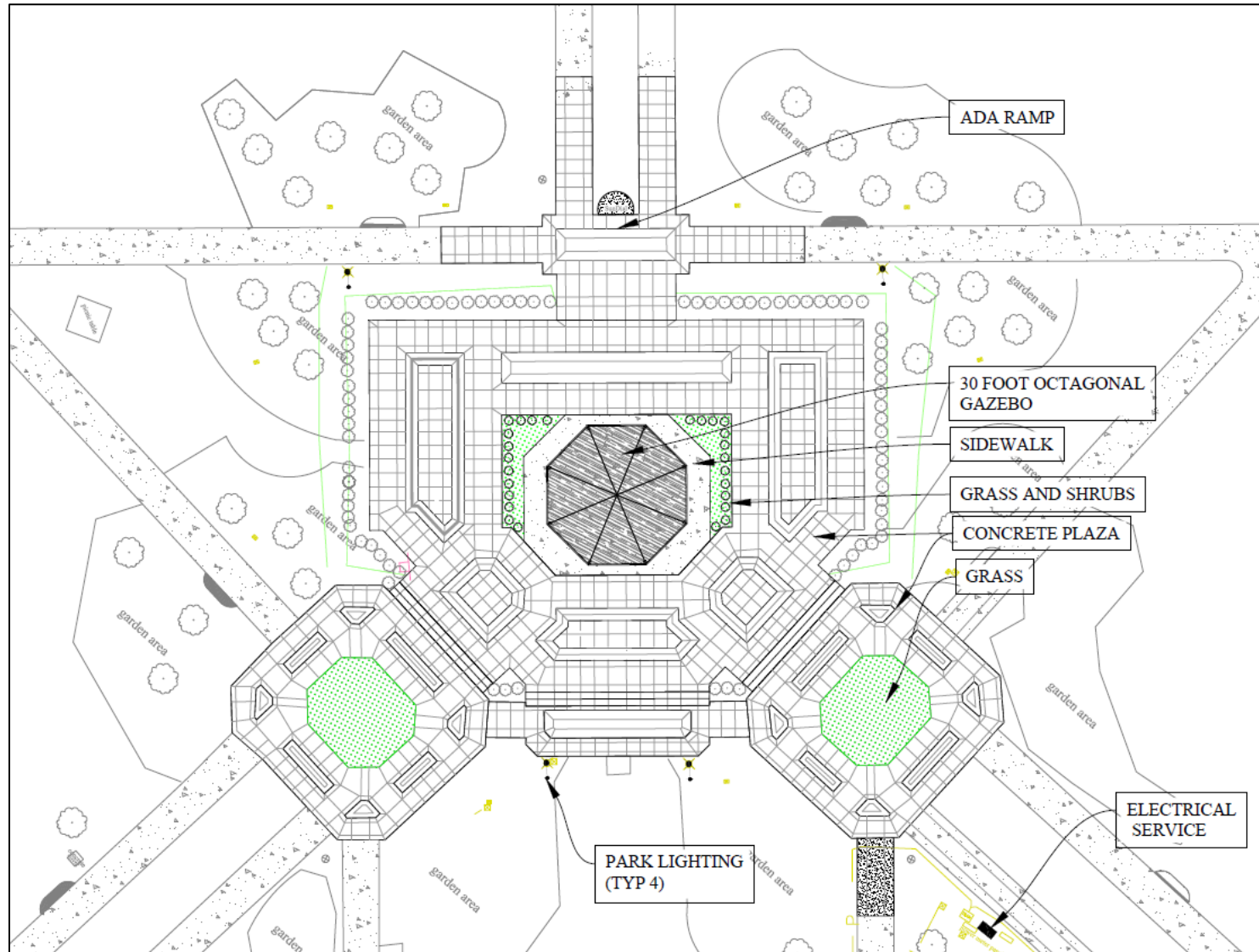
R.A. LONG PARK PLAZA RESTORATION – PROPOSED

- Replace upper and lower plaza with regular concrete and texture; install gazebo in center of upper plaza, replace park lighting and electrical service



R.A. LONG PARK PLAZA RESTORATION PROJECT LONGVIEW PROPOSED

- Wood gazebo painted white, shrubs/ green around the gazebo



R.A. LONG PARK PLAZA RESTORATION ELECTRICAL SERVICE

- Consolidate existing services and provide additional capacity

Existing Services



Proposed Service



R.A. LONG PARK PLAZA RESTORATION

PARK LIGHTING DESIGN



Power
Receptacle

Original Park Light,
1925

Current Park Lights

Provide additional receptacles as required
and as budget allows

Proposed Park Light Design

R.A. LONG PARK PLAZA RESTORATION

DISCUSSION / RECOMMENDATIONS

GAZEBO

Gazebo components and accessories



Pagoda Roof Style



R.A. LONG PARK PLAZA RESTORATION DISCUSSION / RECOMMENDATIONS GAZEBO

Shape and Size: Octagon 30 foot proposed



- Other shapes / sizes available
 - Oval and rectangular

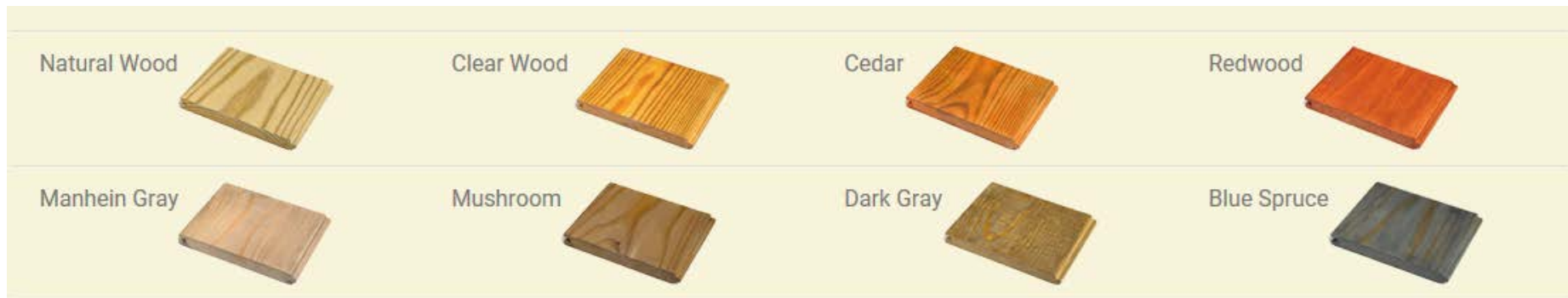
R.A. LONG PARK PLAZA RESTORATION DISCUSSION / RECOMMENDATIONS GAZEBO

Material and colors: Vinyl proposed due to less maintenance

- Vinyl (white is standard color, almond color is 15% more)



- Wood (pressure treated yellow pine)



R.A. LONG PARK PLAZA RESTORATION

DISCUSSION / RECOMMENDATIONS

GAZEBO

Roof type, Architectural shingles proposed due to maintenance and cost

- Architectural Shingle



- Wood shingle
- Metal Roofing

R.A. LONG PARK PLAZA RESTORATION

DISCUSSION / RECOMMENDATIONS - GAZEBO

Proposed gazebo summary	
Proposed	Project Longview
Octagon - 30 foot	same
Vinyl - white color	Wood - white color
Concrete sidewalk around gazebo	Concrete sidewalk and grass / shrub
Architectural shingles – color to be determined	Architectural shingles - Red
Majestic Roof	same
Straight cornice	same
Standard brace	same
Straight post	same
No railing	same
No benched	same
No floor – concrete deck	same
Electrical outlets	same
Standard cupola	Standard cupola – vinyl



Design your own gazebo

<https://www.amishgazebos.com/products/design-your-own-gazebo/>

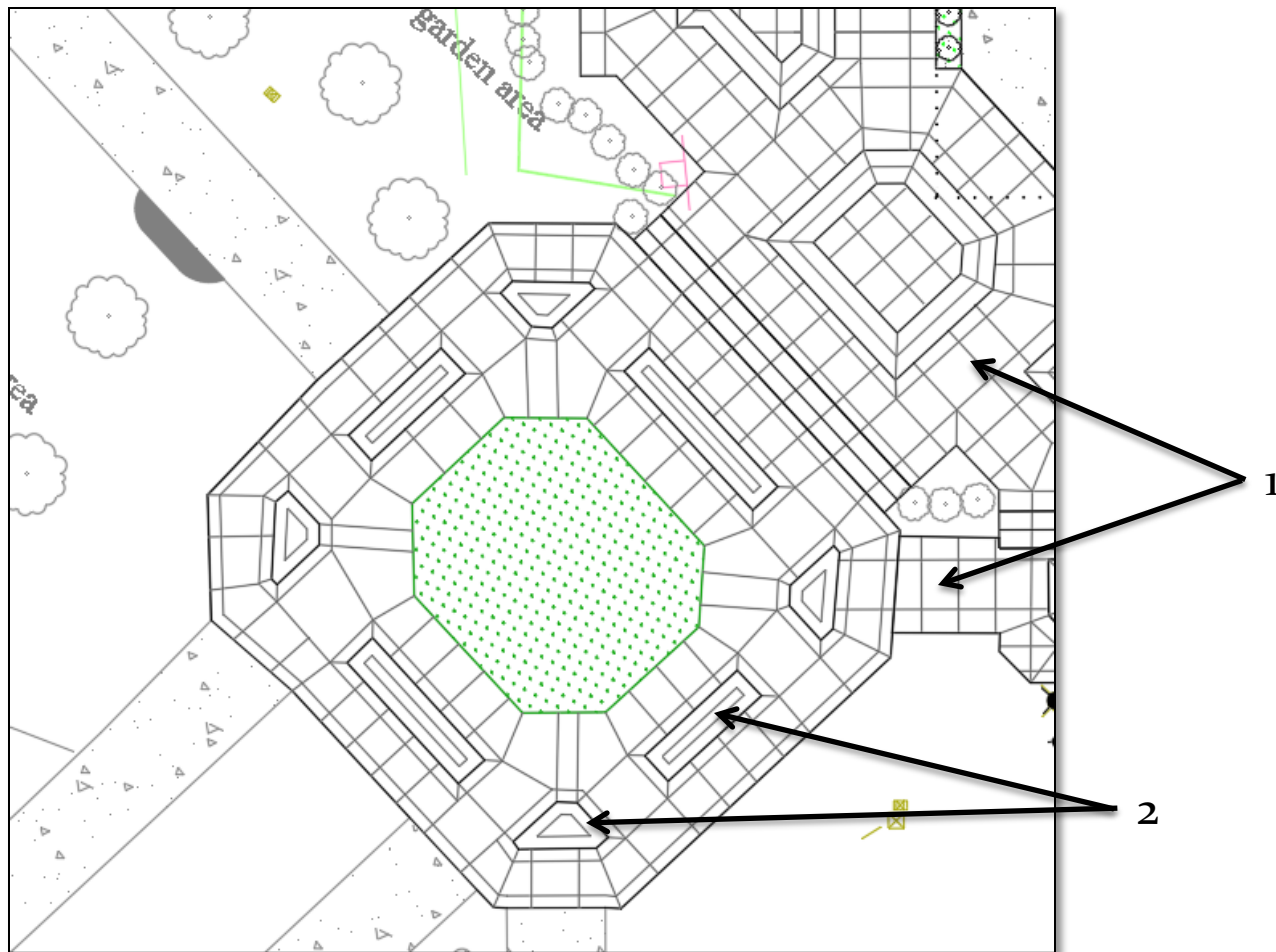
Cupola selection

<https://amishcountrycupolas.com/shop/>

R.A. LONG PARK PLAZA RESTORATION DISCUSSION / RECOMMENDATIONS

CONCRETE

1. Scoring of concrete to follow original plaza pattern
2. The red brick texture is replaced with geometric pattern



R.A. LONG PARK PLAZA RESTORATION DISCUSSION / RECOMMENDATIONS

- Discussion / Recommendations