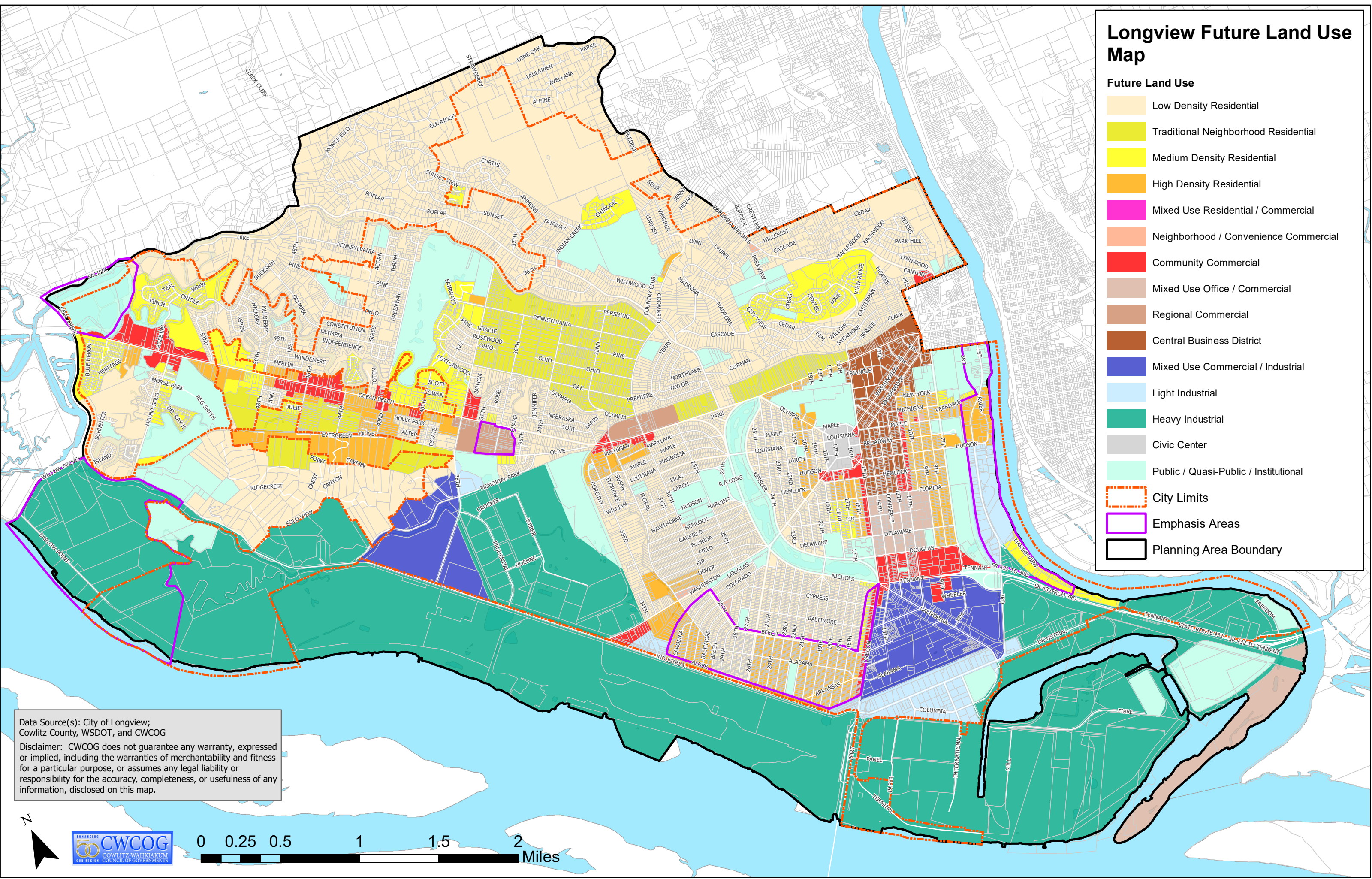


Longview Future Land Use Map

- Future Land Use**
- Low Density Residential
 - Traditional Neighborhood Residential
 - Medium Density Residential
 - High Density Residential
 - Mixed Use Residential / Commercial
 - Neighborhood / Convenience Commercial
 - Community Commercial
 - Mixed Use Office / Commercial
 - Regional Commercial
 - Central Business District
 - Mixed Use Commercial / Industrial
 - Light Industrial
 - Heavy Industrial
 - Civic Center
 - Public / Quasi-Public / Institutional
- City Limits**
- Emphasis Areas**
- Planning Area Boundary**



Data Source(s): City of Longview;
Cowlitz County, WSDOT, and CWCOC

Disclaimer: CWCOC does not guarantee any warranty, expressed or implied, including the warranties of merchantability and fitness for a particular purpose, or assumes any legal liability or responsibility for the accuracy, completeness, or usefulness of any information, disclosed on this map.