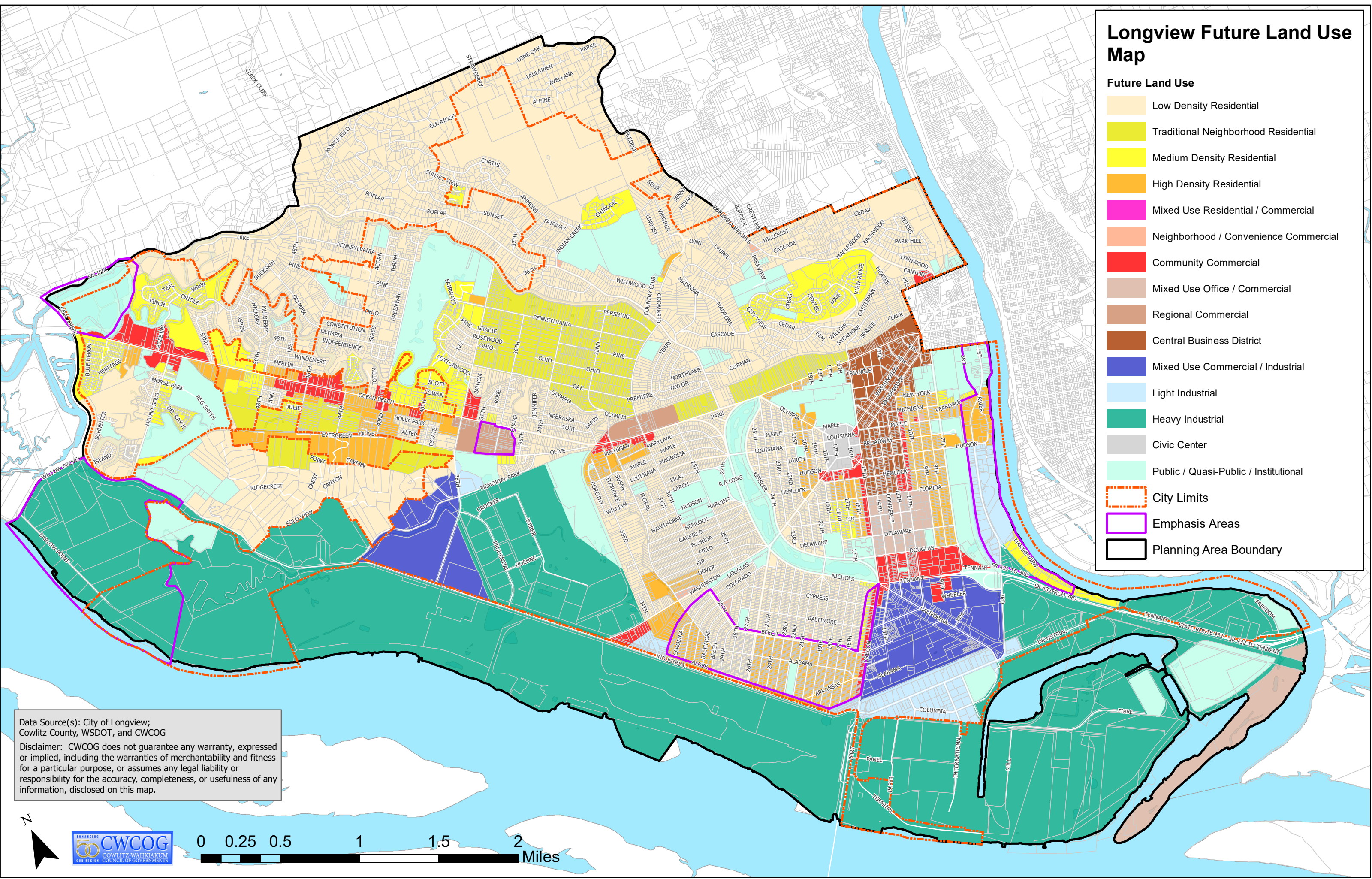


# Longview Future Land Use Map

- Future Land Use**
- Low Density Residential
  - Traditional Neighborhood Residential
  - Medium Density Residential
  - High Density Residential
  - Mixed Use Residential / Commercial
  - Neighborhood / Convenience Commercial
  - Community Commercial
  - Mixed Use Office / Commercial
  - Regional Commercial
  - Central Business District
  - Mixed Use Commercial / Industrial
  - Light Industrial
  - Heavy Industrial
  - Civic Center
  - Public / Quasi-Public / Institutional
- City Limits**
- Emphasis Areas**
- Planning Area Boundary**



Data Source(s): City of Longview;  
Cowlitz County, WSDOT, and CWCOC

Disclaimer: CWCOC does not guarantee any warranty, expressed or implied, including the warranties of merchantability and fitness for a particular purpose, or assumes any legal liability or responsibility for the accuracy, completeness, or usefulness of any information, disclosed on this map.